

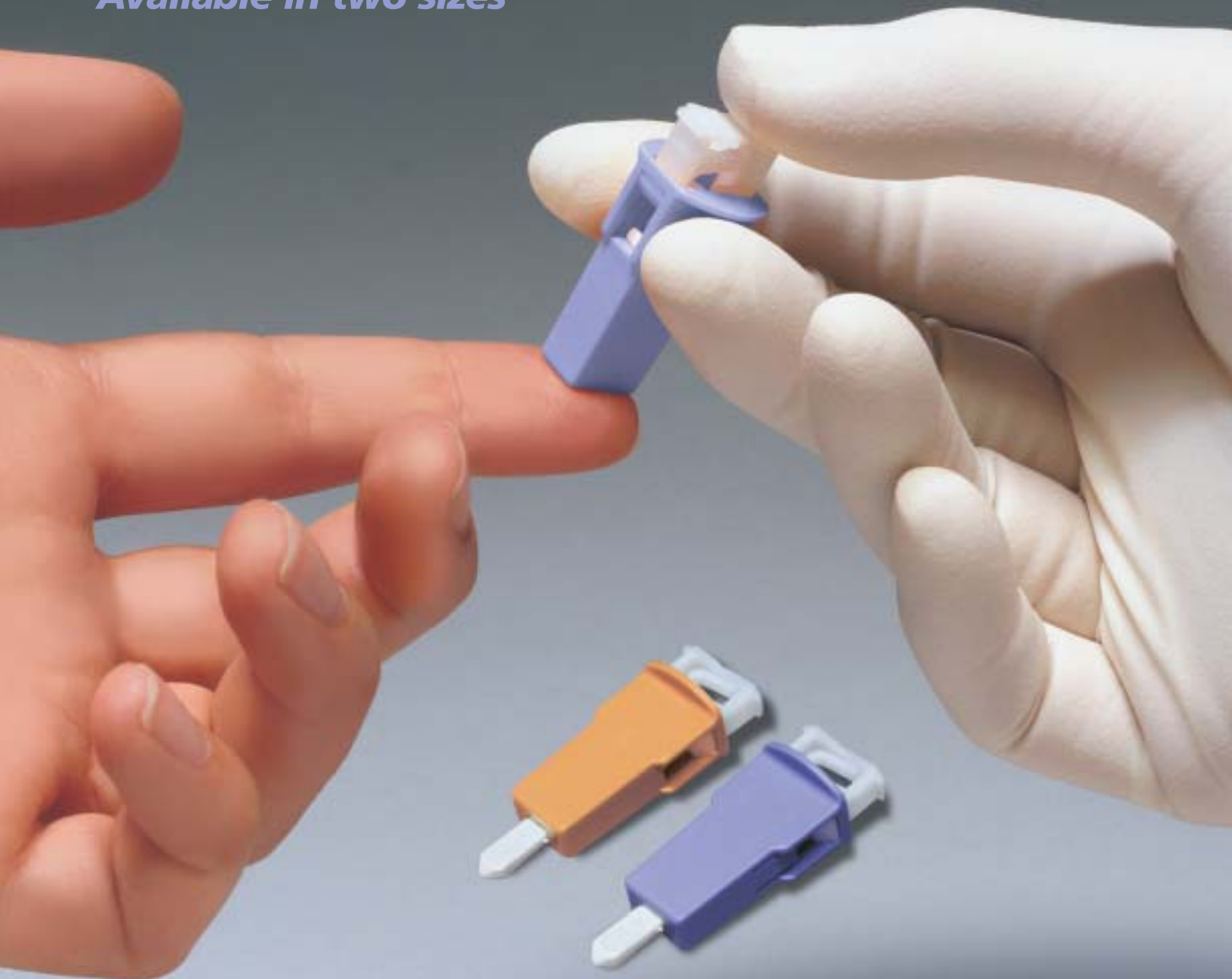
BD Genie™ Needle Lancet

Safety Engineered Capillary Blood Sampling Device
designed for glucose testing



Helping all people
live healthy lives

Available in two sizes

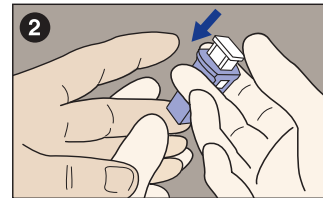
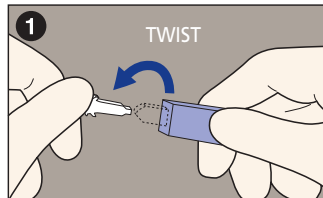


BD Genie™ Needle Lancet

- New purple Genie lancet is the smallest gauge single-use blood glucose lancet available
- Self-contained and single-use with no loading or additional preparation
- Ultra-sharp stainless-steel needle in 23 gauge and 28 gauge sizes
- Automatic and permanent needle retraction minimizes the possibility of injury and reuse
- One millisecond, one-step needle lancet activation provides rapid, precise and consistent incisions

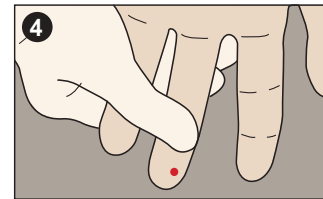
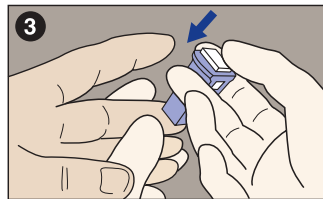
Instructions for Use:

After cleaning the puncture site, TWIST OFF indicator as directed on tab and place in disposal.



Position safety lancet firmly against puncture site as illustrated. Hold lancet between fingers and place thumb on white activation button.

To activate, press white activation button FIRMLY into colored housing with thumb. Button should lock into housing and should not recoil. DO NOT pull lancet away from puncture site until after activation. Do not use if protective tab has been removed. Dispose of used lancet in an appropriate sharps collector.



To obtain sufficient blood flow, hold the puncture site downward and gently apply intermittent pressure to the surrounding tissue. Strong repetitive pressure (milking) must not be applied; it may cause hemolysis or tissue-fluid contamination of the specimen.

NCCLS Dec. 1996, Doc. H4-A4 Vol. 19, No. 16.

BD Genie™ Needle Lancets for Glucose Testing

Catalog #	Description	Color	Depth	Width	Blood Volume	Packaging
366579	Genie™ Needle Lancet	Purple	1.25 mm	28 Ga. Needle	Single Blood Drop	200/Box, 2000/Case
366583	Genie™ Needle Lancet	Orange	2.25 mm	23 Ga. Needle	Single Blood Drop	200/Box, 2000/Case

Other BD Genie™ Lancets for Fingerticks

366580	Genie™ Lancet	Pink	1.0 mm	1.5 mm	Low Blood Flow	200/Box, 2000/Case
366581	Genie™ Lancet	Green	1.5 mm	1.5 mm	Medium Blood Flow	200/Box, 2000/Case
366582	Genie™ Lancet	Blue	2.0 mm	1.5 mm	Medium to High Blood Flow	200/Box, 2000/Case

BD Vacutainer Technical Services: 1.800.631.0174

BD Customer Service: 1.888.237.2762

www.bd.com/vacutainer

Handle all biologic samples and blood collection "sharps" (lancets, needles, luer adapters and blood collection sets) according to the policies and procedures of your facility. Obtain appropriate medical attention in the event of any exposure to biologic samples (for example, through a puncture injury) since they may transmit viral hepatitis, HIV (AIDS) or other infectious diseases. Utilize any built-in needle protector if the blood collection device provides one. Becton Dickinson does not recommend resheilding used needles, but the policies and procedures of your facility may differ and must always be followed. Discard any blood collection "sharps" in biohazard containers approved for their disposal.

BD, BD Logo and all other trademarks are property of Becton, Dickinson and Company. ©2003 BD.

Printed in USA

5/03

VS5825-1



**BD Vacutainer Systems
Preanalytical Solutions**

1 Becton Drive
Franklin Lakes, NJ 07417

