

READACRIT 420591 & MP READACRIT 420593

<u>#</u>	<u>DESCRIPTION</u>	<u>CATALOG NUMBER</u>	<u>REFERENCE NUMBER</u>
N/A	Operator's manual	421451	
1	Motor, 110V	421449	42059101
2	Motor Brush assembly, 2 pk	421450, regular motor	42059102
2a	Motor Brush assembly, 2 pk	421474, "special kit" noted on motor	42059126
3	Timer w/ knob	421479	42059202
4	Knob only (for timer)	421480	42059203
5	Safety switch assembly	421454	42059106
13	Magnifier assembly	421465	42059117
14	Rubber channel	421466	42059118
15	Rubber foot	421204	42010113
17	Rubber grommet	421469	42059121
18	Rubber bumpers	421471	42059123
19	Wrench	421472	42059124
21	Balance tube, sedical tray	421482	42059302
<u>Discontinued parts</u>		<i>DQ'd 8/02</i>	
7	Cover assembly	421476	42059128
8	Catch assembly	421473	42059125
9	Head cover assembly, Gullwing	421461	42059113
10	Head cover, conversion kit	421462	42059114
11	Head cover, hardware kit	421463	42059115
12	Head assembly	421464	42059116
16	Bottom plate & motor bracket	421477	42059129
20	SEDI-CAL tray & cover assembly	421481	42059301
22	Two-place SEDI-CAL slide	421483	42059303
24	Latch	421459	42059111
6	Cordset assembly	no part # , not orderable	
N/A	Foot, old style	421467	42059119
N/A	Knob only, gullwing	421452	42059104
N/A	Timer Conversion kit	421475	42059127

*Part #s apply to Readacrit 420591 and MP Readacrit 420593

ILLUSTRATED PARTS BREAKDOWN,
SPARES and ACCESSORIES
For
READACRIT and MP READACRIT Centrifuges

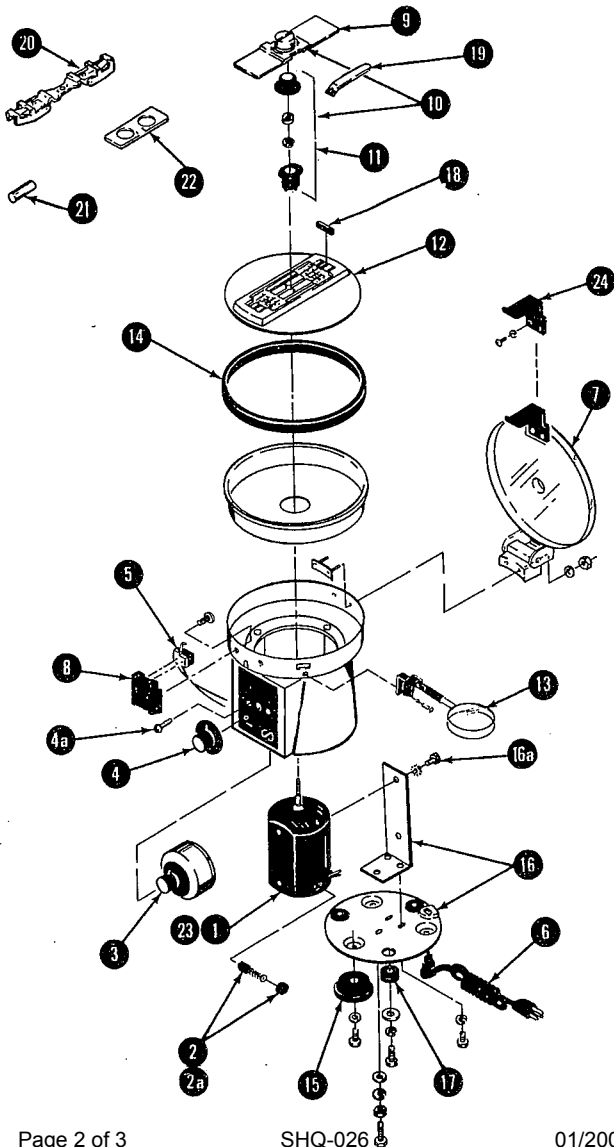


Figure 28. Illustrated Parts Breakdown,
READACRIT and MP READACRIT Centrifuges.

Addendum to Readacrit and MP Readacrit Centrifuge Operators Manual

The rotor for the Readacrit and MP Readacrit has been revised to eliminate the use of a separate head cover as shown in the operator's manual. The new rotor allows simple installation of the Pre-Cal tubes to be centrifuged. Refer to the steps and figures below to properly install the Pre-Cal tubes in the numbered slots.

Pre-Cal Tube Installation

Step 1: Refer to Figure 1. Slide the tube under the tube retainer and gently push the tube toward the center of the rotor while lowering the tube. When properly inserted the tube will lie completely in the slot and rest flat against the rotor carrier as shown in Figure 2.

Step 2: Gently push the tube toward the outer rim of the rotor until the tube makes contact with the rubber bumper in the rotor. Ensure that both ends of the tube are captured under the tube retainers.

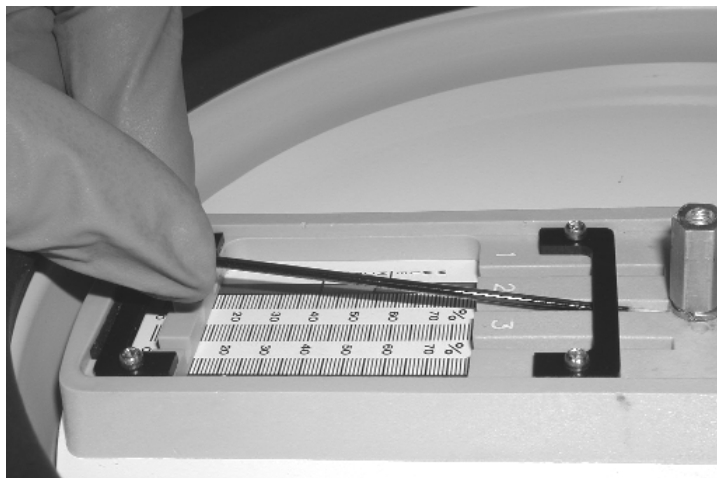


Figure 1

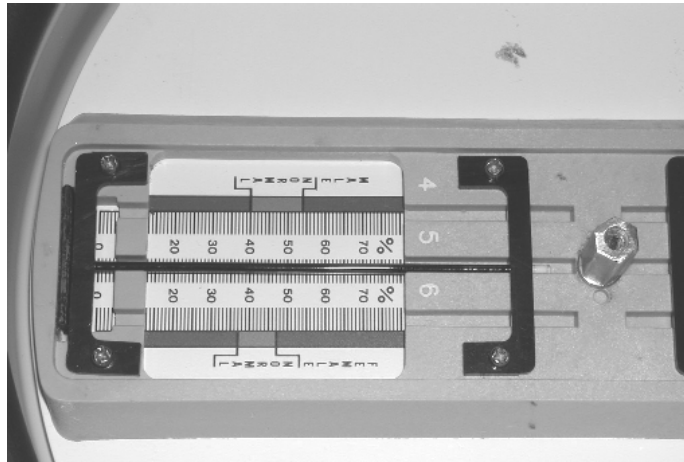


Figure 2

Lid Seal

It is recommended that your centrifuge be periodically checked for a good seal between the lid and bowl gasket. This can be accomplished as follows:

1. Place a piece of paper (approximately .005" thick) between the bowl gasket and the lid.
2. Close and latch the lid and test for a small amount of resistance or drag when pulling the paper out.

Perform this along the entire perimeter of the lid. If no resistance is felt or if there are visible gaps between the lid and lid gasket, the centrifuge must be serviced immediately by BD before operation. Please contact the BD Technical & Informatics Services Department at 1-800-638-8663 for additional assistance.