

The partnership of BD and CSSC brings you the

# Environmental Monitoring Software System (EMSS) — The “Missing Link” to your Data Management Needs

The Environmental Monitoring Software System provides a validated method to assess and document facility operations, collect microbial and/or particulate counts, and analyze and trend the data to ensure that the environmental control

systems are operating as intended. Such trends provide insight on the effectiveness of decontamination procedures, housekeeping practices, personnel training, and the potential for microbial build-up.

## FEATURES / BENEFITS

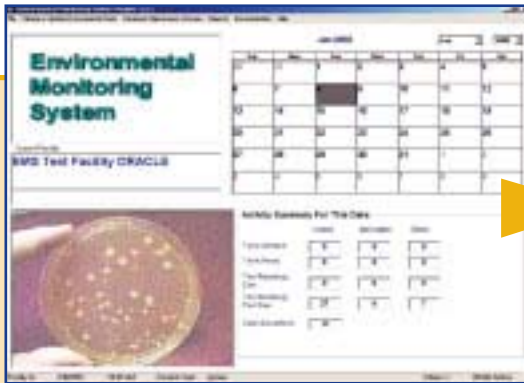
- Provides complete control and reporting of all environmental sampling and testing
- Allows the user to establish layouts of the rooms/areas and identification of test types and sites
- Allows the user to select the frequency of tests (daily, weekly, monthly, etc.)
- Supports a wide variety of predefined tests (i.e. particulate, microbial) as well as user defined tests (i.e. pH and chemical)
- Complies to cGMP environmental monitoring requirements
- Simplifies data collection and reporting
- Automatic generation of survey worksheets and test reading worksheets
- Built-in security access to restrict usage and data modifications
- Comprehensive reporting and analysis package
- Provides data on test result trends for QA/QC analysis and review
- Easily integrated into existing operations
- Automatic “Alert Limit” e-mail notification with accompanying review of historical data for that specific site
- Automatic “Out-of-Limits” notification and corrective action tracking
- Automatic “Objectionable Organism” notification with accompanying review of historical data
- Audit Trail automatically captures all modifications within the database



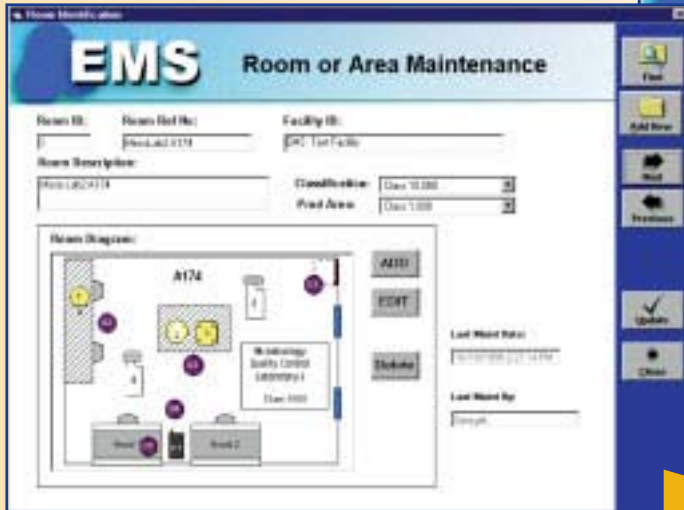
**BD Diagnostic Systems**  
800.638.8663  
[www.bd.com/industrial](http://www.bd.com/industrial)



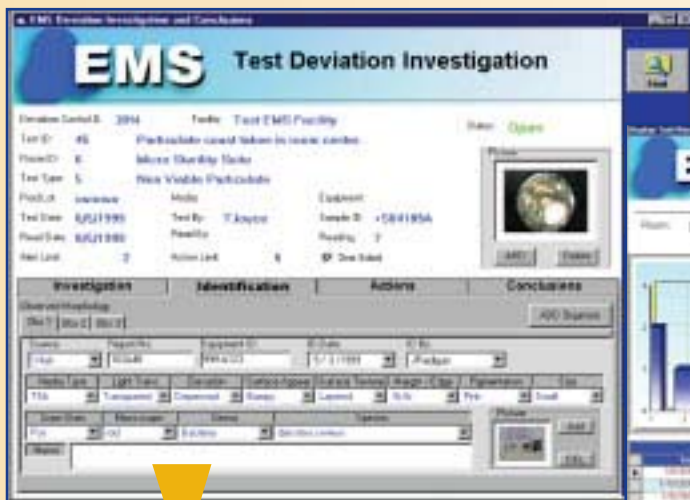
**Compliance Software Solutions Corp**  
888.321.2772  
[www.csoftsol.com](http://www.csoftsol.com)



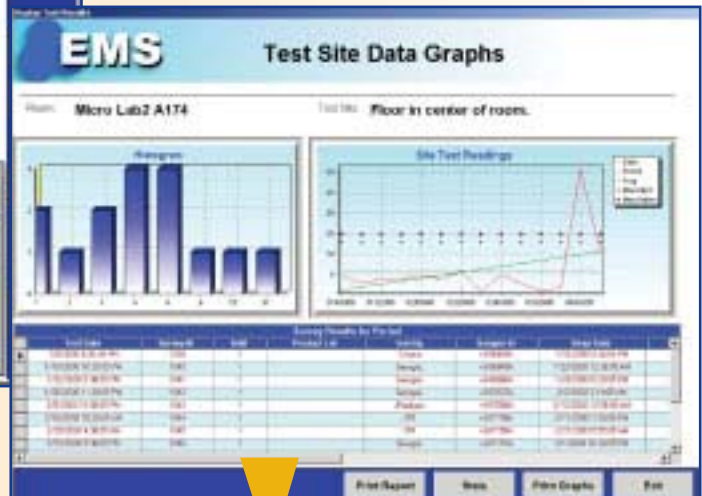
- Comprehensive system interface summarizes current activity status
- All system functions accessible through main menu



- Allows the user to establish layouts of the facility and identification of test types and sites
- Supports a wide variety of predefined tests (i.e. particulate, microbial) as well as user defined tests (i.e. pH, chemical)



- Automatic generation of deviation report documenting all information associated with the Out-of-Limit condition
- Allows for input of data for organism identification (i.e. Gram stain, genus/species, etc.) including pictorial representation



- Comprehensive reporting and historical analysis and trending package
- Provides data on test result trends on-demand for QA/QC analysis and review