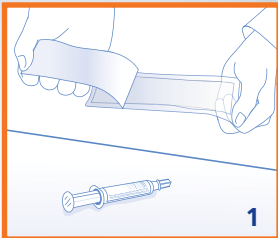
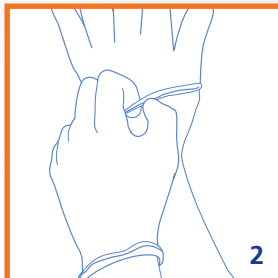


BD PosiFlush™ SF Saline Flush Syringe Usage Guidelines

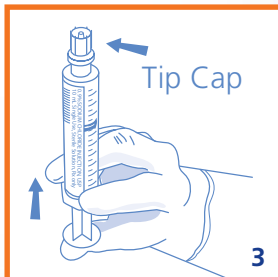
For use on sterile field.



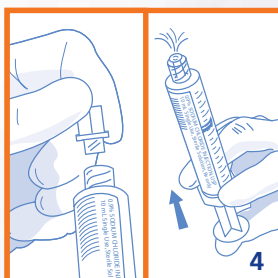
1. Prepare your sterile field.
Aseptically open package and introduce syringe to sterile field.



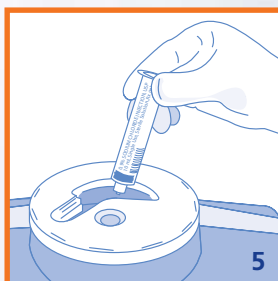
2. Don sterile gloves.



3. Prior to using syringe, break loose the syringe plunger by pushing firmly on thumb press with tip cap still on, until you feel the plunger move.



4. Expel air and excess solution by twisting off tipcap and pushing plunger forward. Use syringe to prime/flush vascular access device following institution policy.



5. Discard used syringe including any unused saline following institution policy. **DO NOT REUSE.**

