

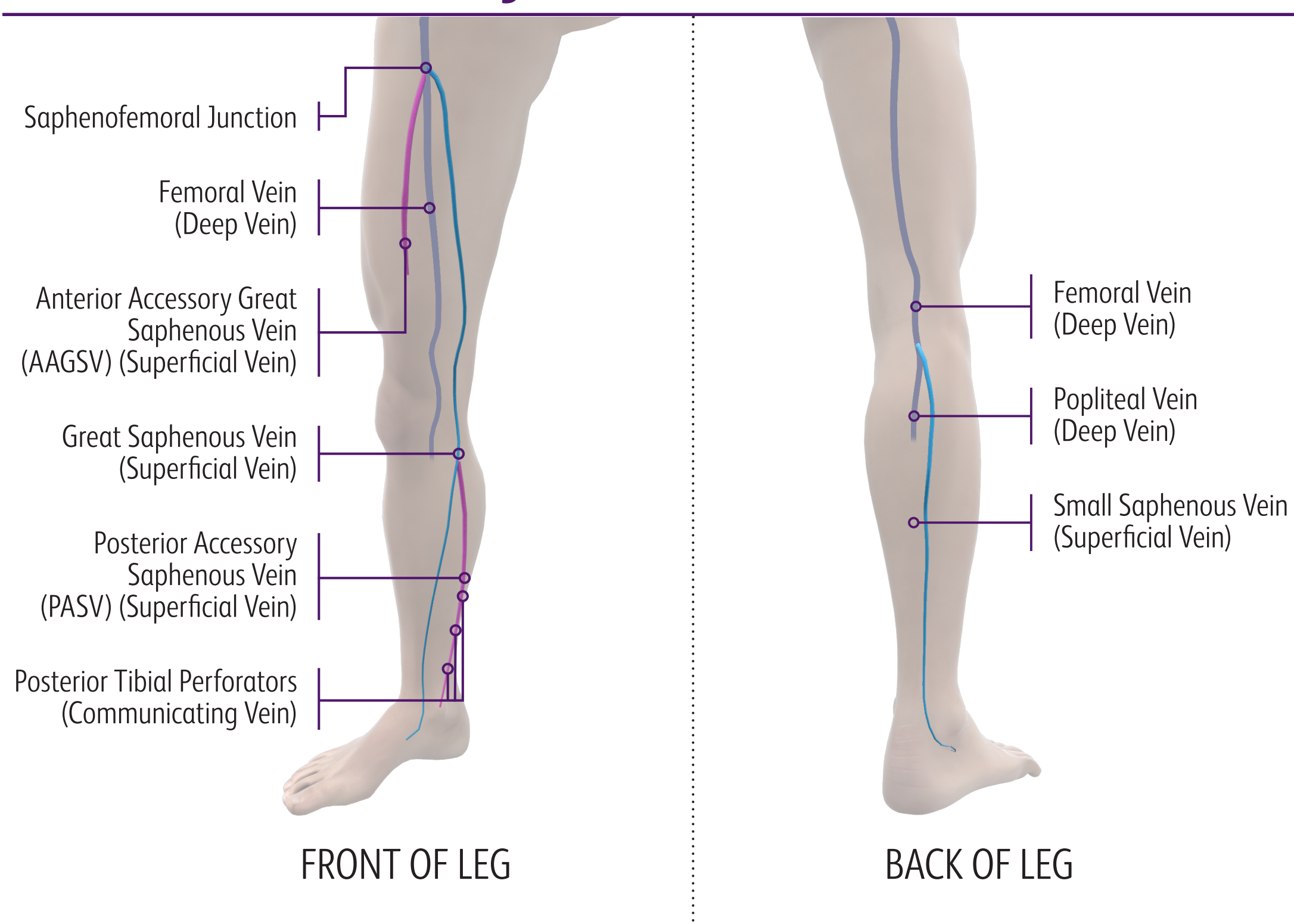
Chronic Venous Disease

Healthy leg veins contain valves that open and close to assist in the return of blood to the heart. Sometimes, the valves become damaged or diseased and can no longer close properly. As a result, blood can leak back through the valve and pool in the lower leg veins. This can lead to chronic venous disease (CVD).¹

Risk Factors

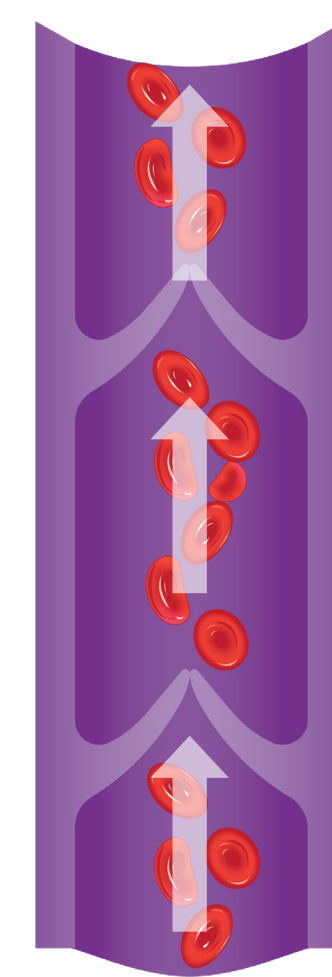
- Family history of CVD
- Age over 50
- Smoking
- Obesity
- Multiple pregnancies
- Long periods of standing or sitting

Venous Anatomy



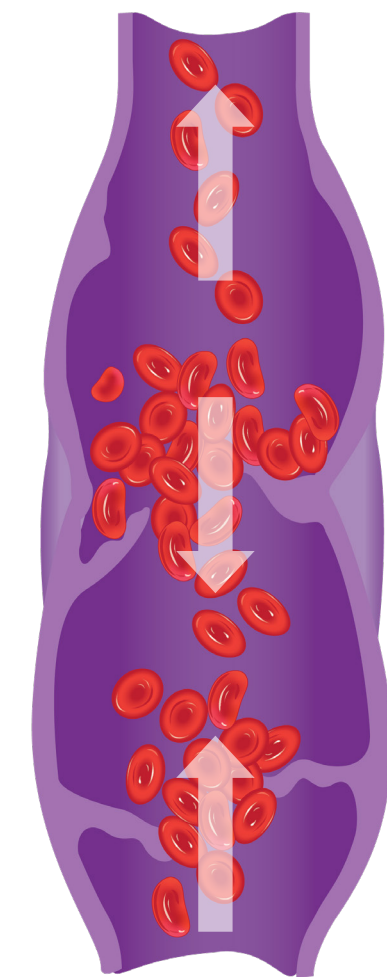
Healthy vs. Diseased Valves

Healthy Valves



Blood moves in one direction - up the legs to the heart

Diseased Valves



Blood leaks back through the diseased valves

Clinical Classifications

CVD is a progressive disease. Without treatment, signs and symptoms may worsen.¹



Leg Signs & Symptoms

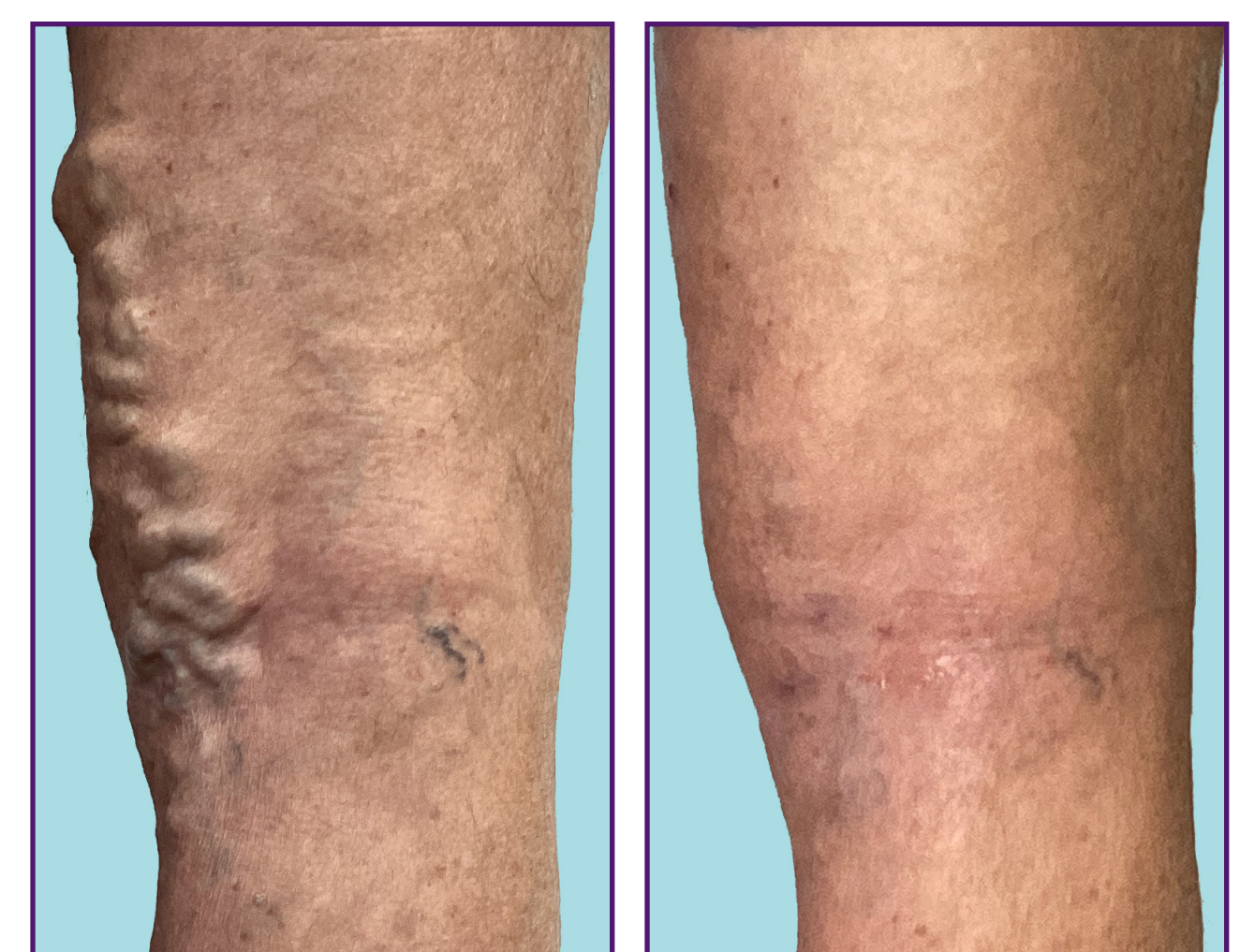
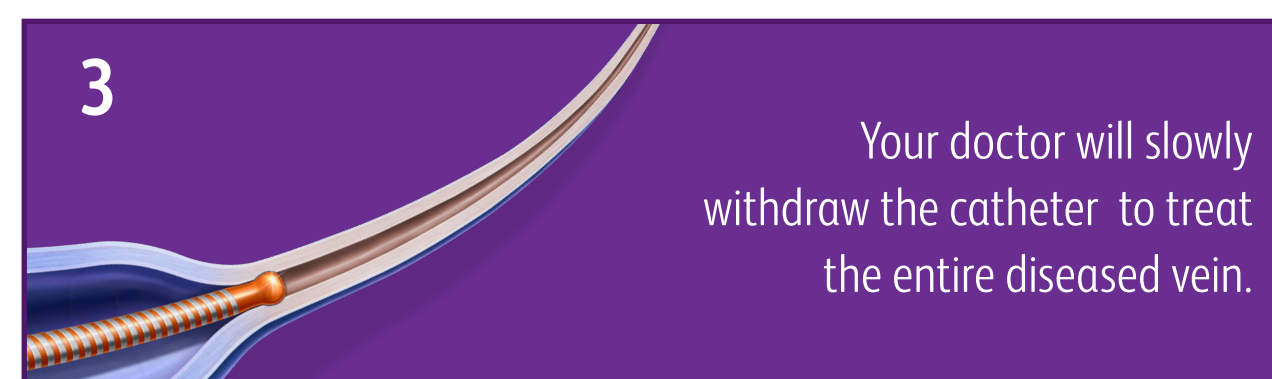
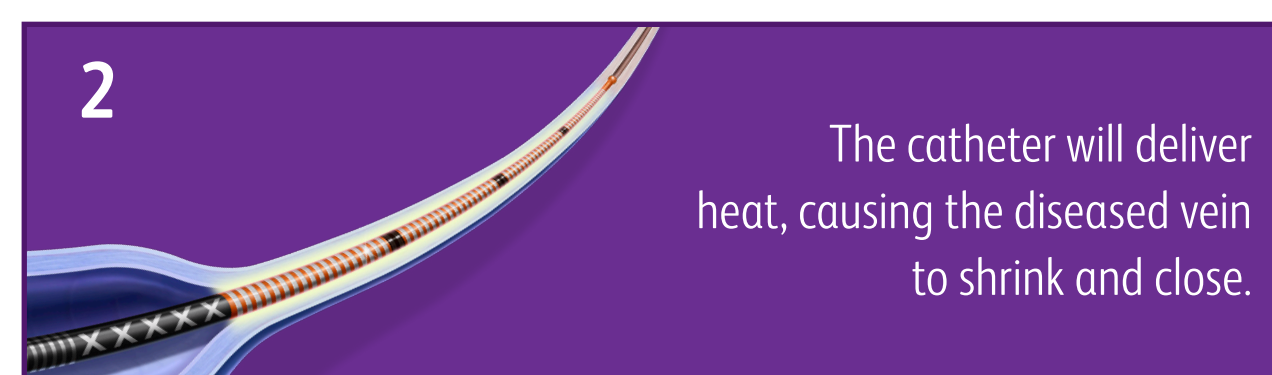
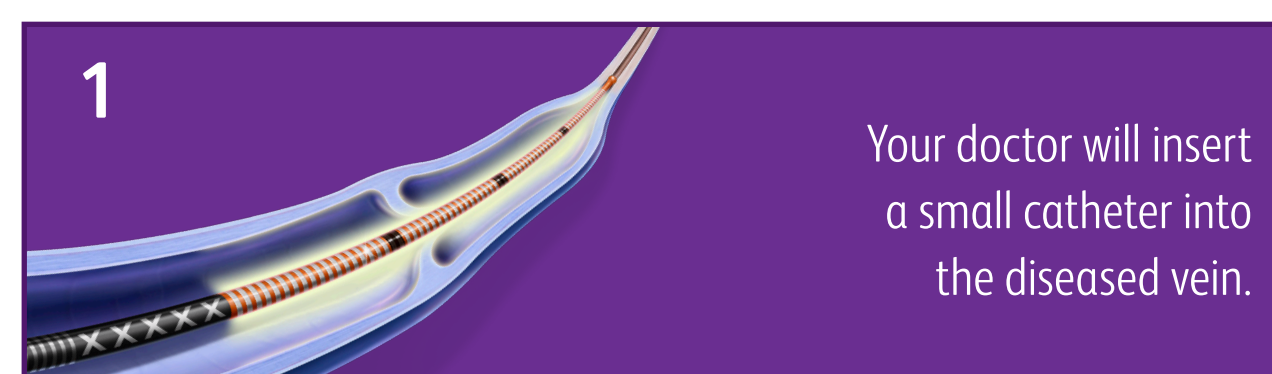
- Varicose veins or spider veins
- Heaviness, aching, tightness, or fatigue
- Discomfort, pain, or swelling
- Restlessness or cramping
- Numbness or itching
- Skin texture or color changes
- Ulcer or wound

How can vein treatment with the Venclose™ RF Ablation Catheter help me?

The Venclose™ System leverages radiofrequency (RF) technology that's been established as a CVD treatment option for more than 20 years.

- Minimally invasive, outpatient procedure
- Small catheter entry site
- Primary treatment choice by physicians

Once treatment is completed successfully, blood flow will naturally reroute towards the nearby deeper and healthier veins to return to the heart.



Before Treatment

After Treatment

Individual treatment results may vary. Images courtesy of Matthew Wise, MD, Advanced Vein Center, Orange, CA

Ask your doctor if vein treatment using the Venclose™ RF Ablation Catheter may be right for you.



bd.com BD, Tempe, AZ, USA, 1 800 321 4254

¹ Eberhardt, R. T., & Raffetto, J. D. (2014). Chronic venous insufficiency. *Circulation*, 130(4), 333-346.

The Venclose™ EVSRF Catheter is intended to be used with the Venclose™ digiRF Generator as a system. The Venclose™ EVSRF catheter is intended for endovascular coagulation of blood vessels in patients with superficial vein reflux. The Venclose™ EVSRF Catheter is contraindicated in patients with thrombus in the vein segment to be treated. Potential adverse events include but are not limited to: vessel perforation; skin discoloration; nerve injury; temporary paresthesia; thrombosis; deep vein thrombosis; phlebitis; hematoma; infection; skin burn; pulmonary embolism; and pain. **Please consult product labels and instructions for the use of indications, contraindications, hazards, warnings, and precautions.** BD, the BD Logo, and Venclose are trademarks of Becton, Dickinson and Company or its affiliates. © 2022 BD. All Rights Reserved. © Illustration by Mike Austin. BD-63755v2 MK00016.B

Venclose™
RF Ablation Catheter