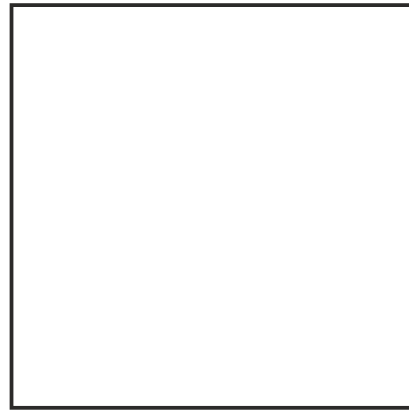


More choices to empower you with confidence and your patient with assurance.

The art of ultrasound visibility  
**3D shapes** designed to maximize your visualization without the need for polymers or gels

### UltraCor™ Twirl™ Breast Tissue Markers

Product Code	Shape	Use	Needle Size	Mat.	Qty.
UCLS17	Curls	Independently or through a coaxial	17G x 10 cm	Nitinol	5 Units/ Carton
UCTW17	Ring				
UCVR17	Clover				



**Disclaimer:** This is an educational material. All content, including text, graphics, images and information etc., contained in or available through this literature is for general information purposes only. For diagnosis or treatment of any medical condition, please consult your physician/doctor. Bard India Healthcare Private Limited and its affiliates, its employees shall not be liable for any damages/claims to any person in any manner whatsoever.

Becton Dickinson India Private Limited  
 5th & 6th Floor, Signature Tower - B, South City - 1 Gurgaon-122001. Tel: 91-124-4124300

[bd.com](http://bd.com)

© 2025 BD. BD, the BD Logo and all other trademarks are the property of Becton, Dickinson and Company or its affiliates.

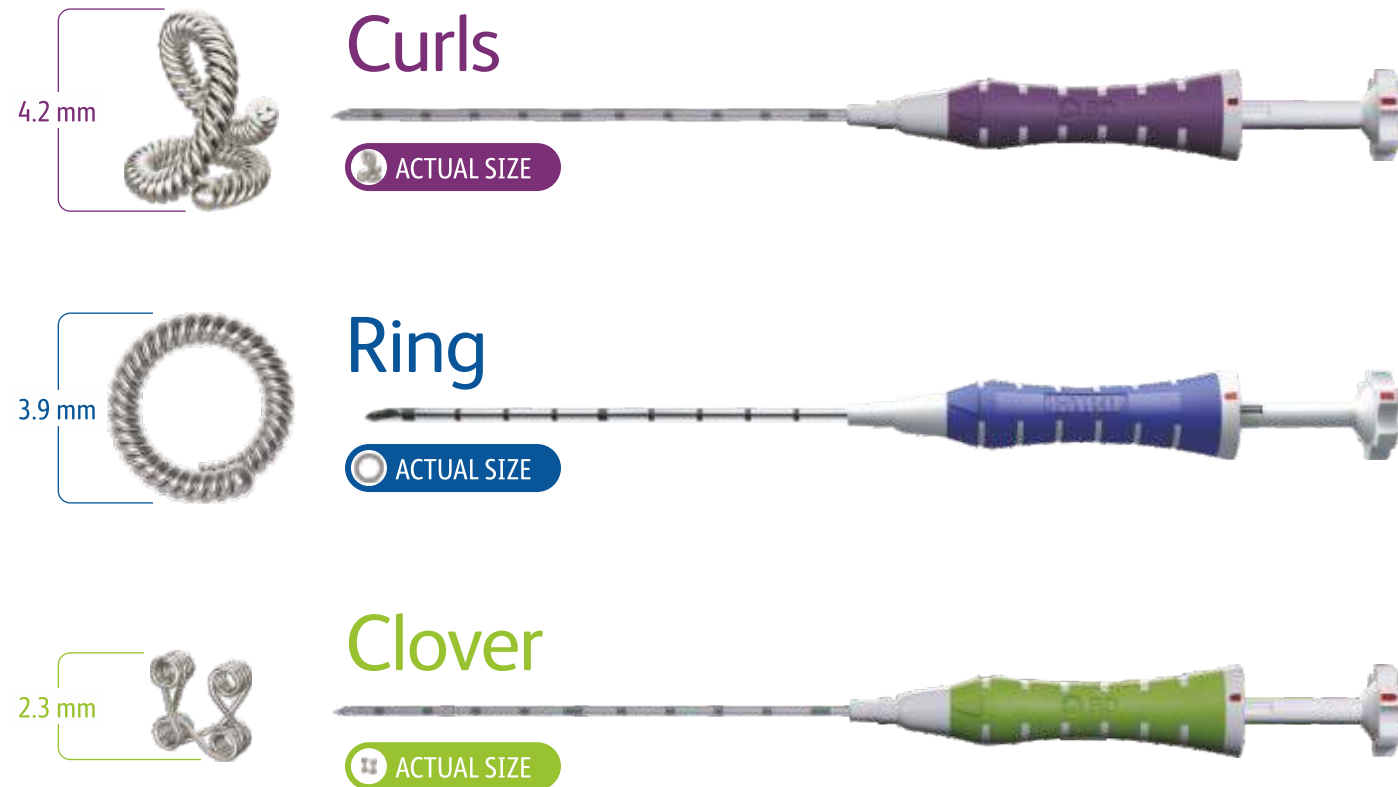


### UltraCor™ Twirl™ Breast Tissue Marker



# Three unique shapes, three unique sizes in 3D

The UltraCor™ Twirl™ Breast Tissue Marker offers three, 3D shapes and sizes designed to maximize visualization. The three shapes offer visibility under ultrasound, mammography and MR imaging\* modalities, and are differentiable under mammography to mark and distinguish lesions within the same breast.



Clover shape is tailored for axilla placement



# Designed and sized for an elevated ultrasound deployment & visualization

## Shapes designed to self-incorporate upon deployment for accurate placement and to minimize migration

The Curls, Ring and Clover are made from nitinol, a nickel-titanium alloy known for its unique properties of shape memory and superelasticity. The “twirled” shapes are designed to resume its shape once deployed from the applicator.

Curls deploying



Ring deploying

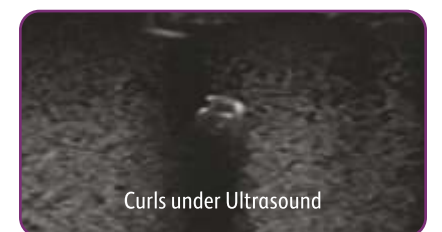


Clover deploying

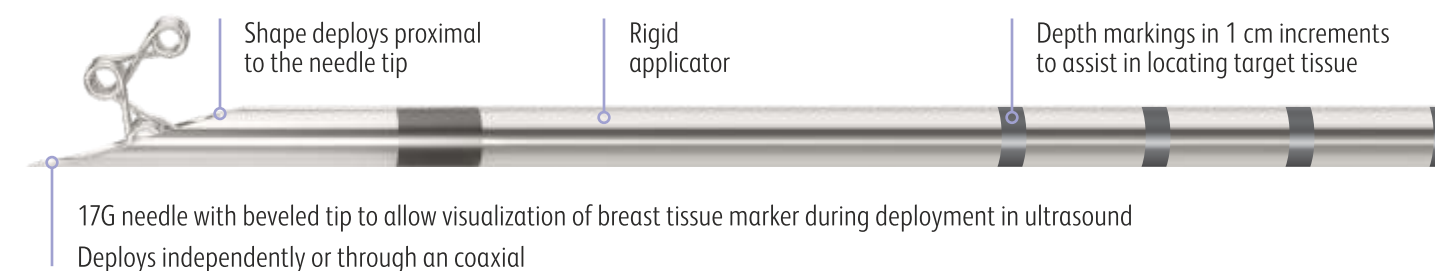


## Long-term ultrasound visualization without gels and polymers

The Curls, Ring and Clover are completely gel- and polymer- free for long-term ultrasound visibility and to limit resorbable materials introduced into the patient’s breast and axilla.



## Rigid, easy-to-use applicator design



\* Not for placement in the MR suite. The wireform is MR conditional. Please see the IFU for MRI Safety Information.