



Your all-in-one solution for port access

Leverage the robust portfolio of
BD Port Access products designed
to benefit clinicians and patients



Table of contents

BD is the market leader in port access



BD Port Access Needles are indicated for the **administration of fluids, drugs and blood sampling** via a surgically implanted vascular port. All BD Port Access Products are designed for:



Patient comfort



Easy to use and clinician safety

All BD Port Access Needles are non-coring to minimize septum damage, offer optional “Y” injection sites for secondary access and are available in a variety of lengths and gauge sizes.

BD offers **all-in-one port access kits and systems that integrate the needle directly within the kit**. Additionally, the AllPoints™ Port Access System is designed in a step-by-step way, to aid clinicians in their efforts towards promoting consistency of care.

Standalone needles

BD® SafeStep™ Huber Needle Set BD® PowerLoc™ Max Power-Injectable Infusion Set.....	5
BD® MiniLoc™ Safety Infusion Set PowerLoc™ Safety Infusion Set.....	7

Kits

BD® Port Access Kits.....	9
BD® AllPoints™ Port Access System.....	11

Accessories

BD® Sentrinx™ 3D Port Dressing.....	19
BD® Amanda™ Port Stabilizer.....	19

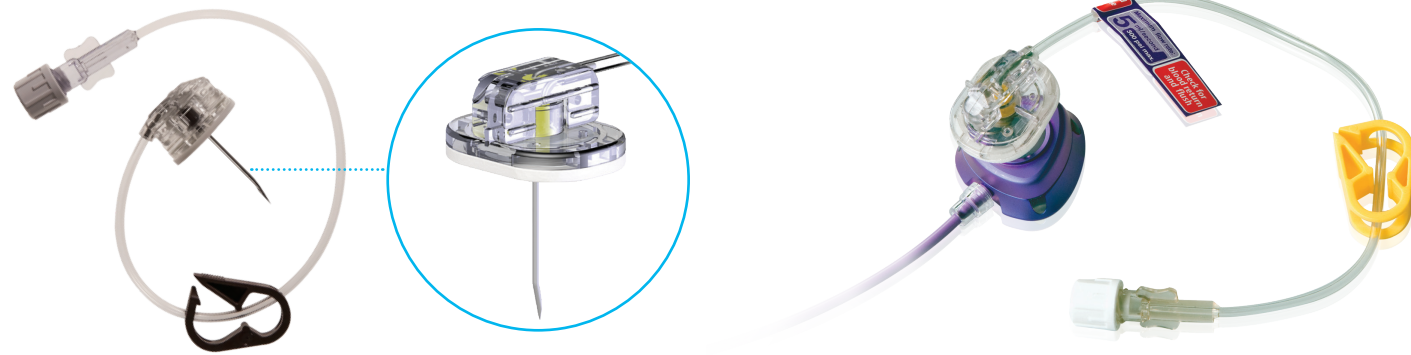


Power-injectable offerings

BD also offers needles that enable contrast agents to be power-injected. This can help **tissues to show up more clearly in contrast-enhanced CT scans**, which supports easier monitoring of patients' conditions.

BD power-injectable needles have a sticker to notify CT technologists of their power-injectable capabilities, and are compatible for use with BD® PowerPort™ Devices and other power-injectable ports. 19 and 20 G power-injectable needles have a maximum flow rate of 5 mL/s, while 22 G needles have a maximum flow rate of 2 mL/s.

Easy to use, flexible placement for venous access on demand



SafeStep™ Huber Needle Set

PowerLoc™ Max Power-Injectable Infusion Set

Easy to use

- **Textured handle and rotating needle head** for maneuvering and positioning
- **Small footprint and wingless design** enhance ease of dressing
- **Increased access site visibility** due to clear plastic base

Designed for patient comfort

- **Stable needle base** designed for comfort during dressing
- **Non-absorbent padded base**, designed for patient comfort
- **Less insertion force** due to needle siliconization port access needles*

Provides clinician safety

- Smooth and simple **single-handed activation**
- Needle-point covered with **audible “click”**
- **Visual indication** of lockout

* Bench testing, not indicative of clinical performance.

Ordering information

SafeStep™ Huber Needle Set

Gauge	Needle length	Product code with Y-site and needle-free injection cap	Product code without Y-site
19 G	0.5 in.	LH-0039YN	LH-0039
	0.75 in.	LH-0033YN	LH-0033
	1 in.	LH-0034YN	LH-0034
	1.5 in.	LH-0040YN	LH-0040
20 G	0.5 in.	LH-0037YN	LH-0037
	0.75 in.	LH-0031YN	LH-0031
	1 in.	LH-0032YN	LH-0032
	1.5 in.	LH-0038YN	LH-0038
22 G	0.5 in.	LH-0035YN	LH-0035
	0.75 in.	LH-0029YN	LH-0029
	1 in.	LH-0030YN	LH-0030
	1.5 in.	LH-0036YN	LH-0036

The SafeStep™ Set comes 25 per case, with a minimum order quantity of one case.

PowerLoc™ Max Power-Injectable Infusion Set

Gauge	Needle length	Product code with Y-site	Product code without Y-site
19 G	0.75 in.	0131975	0141975
	1 in.	0131910	0141910
	1.5 in.	0131915	0141915
20 G	0.75 in.	0132075	0142075
	1 in.	0132010	0142010
	1.5 in.	0132015	0142015
22 G	0.75 in.	0132275	0142275
	1 in.	0132210	0142210
	1.5 in.	0132215	0142215

The PowerLoc™ Max Set comes 25 per case, with a minimum order quantity of one case.

Ideal for dressing the access site



MiniLoc™ Safety Infusion Set

PowerLoc™ Safety Infusion Set

Easy to use

- Ergonomic winged design provides controlled access
- Dual lumen port compatible

Designed for patient comfort

- Low profile and small footprint facilitate ease of dressing
- Lower insertion and penetration force than other currently marketed non-siliconized port access needles*

Provides clinician safety

- Dual action safety mechanism shields the needle point and needle locks into place after removal
- Audible “click”, a tactile feel, and a visual indicator verify the lockout for safe removal, transport and disposal

* Bench testing, not indicative of clinical performance.

Ordering information

MiniLoc™ Safety Infusion Set

Gauge	Needle length	Product code with Y-site	Product code with Y-site and needle-free injection cap	Product code without Y-site
19 G	0.5 in.	0681950	S02319-50	0631950
	0.75 in.	0681934	S02319-75	0631934
	1 in.	0681910	S02319-10	0631910
	1.5 in.	0681915	S02319-15	0631915
20 G	0.5 in.	0682050	S02320-50	0632050
	0.75 in.	0682034	S02320-75	0632034
	1 in.	0682010	S02320-10	0632010
	1.5 in.	0682015	S02320-15	0632015
22 G	0.5 in.	0682250	S02322-50	0632250
	0.75 in.	0682234	S02322-75	0632234
	1 in.	0682210	S02322-10	0632210
	1.5 in.	0682215	S02322-15	0632215

The MiniLoc™ Set comes 20 per case, with a minimum order quantity of one case.

PowerLoc™ Safety Infusion Set

Gauge	Needle length	Product code with Y-site	Product code without Y-site
19 G	0.75 in.	0671934	0651934
	1 in.	0671910	0651910
	1.5 in.	0671915	0651915
20 G	0.75 in.	0672034	0652034
	1 in.	0672010	0652010
	1.5 in.	0672015	0652015
22 G	0.75 in.	0672234	0652234
	1 in.	0672210	0652210
	1.5 in.	0672215	0652215

The PowerLoc™ Set comes 20 per case, with a minimum order quantity of one case.

The wings of PowerLoc™ and MiniLoc™ are colored based on gauge size (19 G clear, 20 G yellow, 22 G black)

Your answer for port access



BD™ Port Access Kits



The all-inclusive kit by BD

BD™ Port Access Kits provide an **all-in-one convenient solution** with components organized to promote standardized, sterile “best practices” for port access-related procedures.

BD® Port Access Kit components

Description	Kit	Description	Kit
Syringe, sodium chloride (saline) 0.9%, 10 mL	1	Prep pad, alcohol	1
BD® Chloraprep™ One-step Applicator	1	Prep pad, skin protectant	1
Dressing, transparent	1	Tape strips, anchor (3 per)	1
Gauze pad, 2 in. x 2 in.	4	Towel, absorbent	1
Gloves, non-latex, sterile	2	Dressing change label	1
Mask	1	Procedure checklist	1

Ordering information

BD™ Port Access Kits by needle type

Gauge	Needle length	With Y-site product code	Without Y-site product code
PowerLoc™ Max Power-Injectable Infusion Set			
19 G	0.75 in.	2131975	2141975
	1 in.	2131910	2141910
	1.5 in.	2131915	2141915
20 G	0.75 in.	2132075	2142075
	1 in.	2132010	2142010
	1.5 in.	2132015	2142015
22 G	0.75 in.	2132275	2142275
	1 in.	2132210	2142210
	1.5 in.	2132215	2142215
PowerLoc™ Safety Infusion Set			
19 G	0.75 in.	2671934	2651934
	1 in.	2671910	2651910
	1.5 in.	2671915	2651915
20 G	0.75 in.	2672034	2652034
	1 in.	2672010	2652010
	1.5 in.	2672015	2652015
22 G	0.75 in.	2672234	2652234
	1 in.	2672210	2652210
	1.5 in.	2672215	2652215
MiniLoc™ Safety Infusion Set			
19 G	0.75 in.	2681934	2631934
	1 in.	2681910	2631910
	1.5 in.	2681915	2631915
20 G	0.75 in.	2682034	2632034
	1 in.	2682010	2632010
	1.5 in.	2682015	2632015
22 G	0.75 in.	2682234	2632234
	1 in.	2682210	2632210
	1.5 in.	2682215	2632215
SafeStep™ Huber Needle Set			
19 G	0.75 in.	PA-0033YN	PA-0033
	1 in.	PA-0034YN	PA-0034
	1.5 in.	PA-0040YN	PA-0040
20 G	0.75 in.	PA-0031YN	PA-0031
	1 in.	PA-0032YN	PA-0032
	1.5 in.	PA-0038YN	PA-0038
22 G	0.75 in.	PA-0029YN	PA-0029
	1 in.	PA-0030YN	PA-0030
	1.5 in.	PA-0036YN	PA-0036

Right people. Right process.
Done right.



Exclusive to BD and included in the AllPoints™ Port Access System

Sentrix™ 3D Port Dressing

This 3D domed dressing, created specifically for port access, is designed to fit over the port needle and lay flat against the skin.



Purell® Advanced Hand Sanitizer (gel)

This single-use hand sanitizer package is available through BD, and helps to ensure compliance with hand-hygiene policies.




Amanda™ Port Stabilizer

The Amanda™ Port Stabilizer is designed to aid in access when inserting the infusion needle into a port. BD developed the stabilizer to work with most power and non-power-injectable ports on the market.



AllPoints™ Port Access Systems

 A step-by-step port access system designed to aid clinicians in their efforts towards promoting consistency of care.

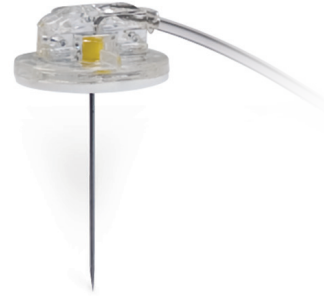
- Components are presented in a **step-by-step, sequential layout** that may promote consistency of care
- **Visual guide and checklist** are included to educate and assist in tracking compliance with the procedure
- **Masks, gloves, hand sanitizer** and an **absorbent towel** are included to assist clinicians in maintaining sterile technique
- **Sterile field** accommodates a variety of workspace environments
- Features and layout are designed to **follow industry guidelines** for accessing a patient's implanted port

System configurations

- ✔ **Power and non-power-injectable** device options
- ✔ **Infusion needles** with or without the Amanda™ Port Stabilizer
- ✔ **Color-coded packaging by infusion needle type** for quick and easy identification
- ✔ **CHG disc or gel pad offerings available**

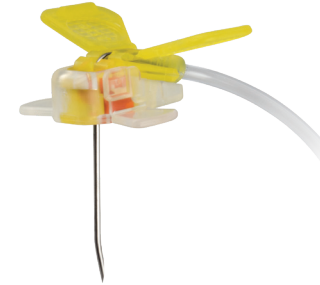
AllPoints™ Port Access Systems ordering information

PowerLoc™ Max Safety Infusion Set



Component	Product codes																				
	AN132010	AN132010B	AN132010G	AN132010M	AN132075	AN132075B	AN132075G	AN132075M	AN142010	AN142010B	AN142010G	AN142010M	AN142075	AN142075B	AN142075G	AN142075M	AS132075	AS142010	AS142010G	AS142075	
Prep pad, skin protectant	1	1	1	1	1	1	1	1	1	1	1	1	1	1	1	1	1	1	1	1	1
Towel, absorbent	1	1	1	1	1	1	1	1	1	1	1	1	1	1	1	1					
Syringe, sodium chloride (saline) 0.9%, 10mL	1	1	1	1	1	1	1	1	1	1	1	1	1	1	1	1	1	1	1	1	1
Procedural checklist and visual guide	1	1	1	1	1	1	1	1	1	1	1	1	1	1	1	1	1	1	1	1	1
BD® GuardIVa™ Antimicrobial Hemostatic IV Dressing			1			1				1				1				1			
BioPatch® Disk		1				1				1				1							
3M™ Tegaderm™ CHG Gel Pad				1			1				1				1						
Hand sanitizer packet	2	2	2	2	2	2	2	2	2	2	2	2	2	2	2	2	2	2	2	2	2
Sentrinx™ 3D Port Dressing	1	1	1	1	1	1	1	1	1	1	1	1	1	1	1	1	1	1	1	1	1
Gloves (2 pairs)	1	1	1	1	1	1	1	1	1	1	1	1	1	1	1	1	1	1	1	1	1
Masks	2	2	2	2	2	2	2	2	2	2	2	2	2	2	2	2	2	2	2	2	2
Chloraprep™ Solution One-Step Applicator, 3 mL	1	1	1	1	1	1	1	1	1	1	1	1	1	1	1	1	1	1	1	1	1
Fenestrated drape																	1	1	1	1	1

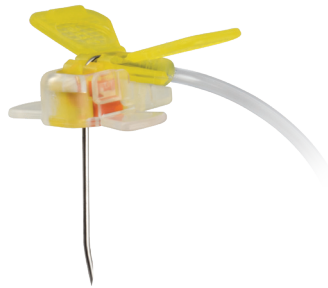
PowerLoc™ Safety Infusion Set



Component	Product codes																
	AN652010	AN652010B	AN652010G	AN652010M	AN652034	AN652034B	AN652034G	AN652034M	AN672010	AN672010B	AN672010G	AN672010M	AN672034	AN672034B	AN672034G	AN672034M	
Prep pad, skin protectant	1	1	1	1	1	1	1	1	1	1	1	1	1	1	1	1	
Towel, absorbent	1	1	1	1	1	1	1	1	1	1	1	1	1	1	1	1	
Syringe, sodium chloride (saline) 0.9%, 10mL	1	1	1	1	1	1	1	1	1	1	1	1	1	1	1	1	
Procedural checklist and visual guide	1	1	1	1	1	1	1	1	1	1	1	1	1	1	1	1	
GuardIVa™ Antimicrobial Hemostatic IV Dressing			1				1					1			1		
BioPatch® Disk		1				1				1				1			
3M™ Tegaderm™ CHG Gel Pad				1			1					1			1		
Hand sanitizer packet	2	2	2	2	2	2	2	2	2	2	2	2	2	2	2	2	
Sentrinx™ 3D Port Dressing	1	1	1	1	1	1	1	1	1	1	1	1	1	1	1	1	
Gloves (2 pairs)	1	1	1	1	1	1	1	1	1	1	1	1	1	1	1	1	
Masks	2	2	2	2	2	2	2	2	2	2	2	2	2	2	2	2	
Chloraprep™ Solution One-Step Applicator, 3 mL	1	1	1	1	1	1	1	1	1	1	1	1	1	1	1	1	

AllPoints™ Port Access Systems ordering information

MiniLoc™ Safety Infusion Set



Component	Product codes															
	AN632010	AN632010B	AN632010G	AN632010M	AN632034	AN632034B	AN632034G	AN632034M	AN682010	AN682010B	AN682010G	AN682010M	AN682034	AN682034B	AN682034G	AN682034M
Prep pad, skin protectant	1	1	1	1	1	1	1	1	1	1	1	1	1	1	1	1
Towel, absorbent	1	1	1	1	1	1	1	1	1	1	1	1	1	1	1	1
Syringe, sodium chloride (saline) 0.9%, 10mL	1	1	1	1	1	1	1	1	1	1	1	1	1	1	1	1
Procedural checklist and visual guide	1	1	1	1	1	1	1	1	1	1	1	1	1	1	1	1
GuardIVa™ Antimicrobial Hemostatic IV Dressing			1								1				1	
BioPatch® Disk		1				1				1				1		
3M™ Tegaderm™ CHG Gel Pad				1				1				1				1
Hand sanitizer packet	2	2	2	2	2	2	2	2	2	2	2	2	2	2	2	2
Sentrix™ 3D Port Dressing	1	1	1	1	1	1	1	1	1	1	1	1	1	1	1	1
Gloves (2 pairs)	1	1	1	1	1	1	1	1	1	1	1	1	1	1	1	1
Masks	2	2	2	2	2	2	2	2	2	2	2	2	2	2	2	2
Chloraprep™ Solution One-Step Applicator, 3 mL	1	1	1	1	1	1	1	1	1	1	1	1	1	1	1	1

SafeStep™ Huber Needle Set



Component	Product codes																						
	AN152010	AN152010B	AN152010G	AN152010M	AN152075	AN152075B	AN152075G	AN152075M	AN162010	AN162010B	AN162010G	AN162010M	AN162075	AN162075B	AN162075G	AN162075M	AS152075	AS152075G	AS162010	AS162010G	AS162075	AS162075G	
Prep pad, skin protectant	1	1	1	1	1	1	1	1	1	1	1	1	1	1	1	1	1	1	1	1	1	1	1
Towel, absorbent	1	1	1	1	1	1	1	1	1	1	1	1	1	1	1	1							
Syringe, sodium chloride (saline) 0.9%, 10mL	1	1	1	1	1	1	1	1	1	1	1	1	1	1	1	1	1	1	1	1	1	1	1
Procedural checklist and visual guide	1	1	1	1	1	1	1	1	1	1	1	1	1	1	1	1	1	1	1	1	1	1	1
GuardIVa™ Antimicrobial Hemostatic IV Dressing			1															1					
BioPatch® Disk		1																					
3M™ Tegaderm™ CHG Gel Pad																							
Hand sanitizer packet	2	2	2	2	2	2	2	2	2	2	2	2	2	2	2	2	2	2	2	2	2	2	2
Sentrix™ 3D Port Dressing	1	1	1	1	1	1	1	1	1	1	1	1	1	1	1	1	1	1	1	1	1	1	1
Gloves (2 pairs)	1	1	1	1	1	1	1	1	1	1	1	1	1	1	1	1	1	1	1	1	1	1	1
Masks	2	2	2	2	2	2	2	2	2	2	2	2	2	2	2	2	2	2	2	2	2	2	2
Chloraprep™ Solution One-Step Applicator, 3 mL	1	1	1	1	1	1	1	1	1	1	1	1	1	1	1	1	1	1	1	1	1	1	1
Fenestrated drape																			1	1	1	1	1

A 3D solution to a 3D problem



Sentrinex™ 3D Port Dressing

Port needles can be difficult to dress and maintain due to their size and 3-dimensional shape, but in spite of this, port access sites are still commonly dressed with 2-dimensional transparent membrane dressings.



Unique design

The Sentrinex™ 3D Port Dressing has been uniquely designed and specifically engineered to cover and protect port access sites and secure infusion needle tubing.



3D profile

The port access dressing is available with a 3D profile, providing a 3-dimensional sterile environment for port access needles.



Adhesive-free zone

The Sentrinex™ 3D Port Dressing is designed to prevent pulling at the needle site during wear and upon removal.

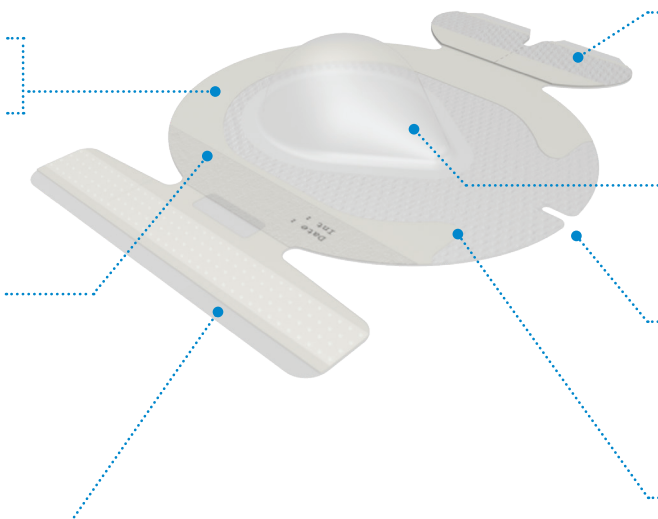
Key features

Circular design: Designed to conform easily on difficult-to-dress areas

All-in-one dressing design: Designed to promote consistent application and minimize variation

Documentation strip: Allows clinicians to record essential information for catheter care and maintenance

Clear tape strip: Included for additional securement



Securement strip: Protects the dressing from premature failure due to force exerted by the tubing

3D bubble: Specifically designed to accommodate the 3D profile of the port access needle

Tubing notch: Helps direct the correct placement of the dressings

Reinforced, cloth border: Helps to maintain an occlusive, sterile barrier while adding rigidity and strength

Ordering information

Sentrinex™ 3D Port Dressing

Product code	Description	Quantity
SXSPT01	Sentrinex™ 3D Port Dressing (stand-alone)	100 per box

The Sentrinex™ 3D Port Dressing comes in every AllPoints™ Port Access System.

Designed to promote secure and easy port access

Amanda™ Port Stabilizer

Amanda was a young cancer patient who dreamed about making the world a little easier for patients with ports. That's why BD, through Amanda's inspiration, developed the Amanda™ Port Stabilizer.



Key features

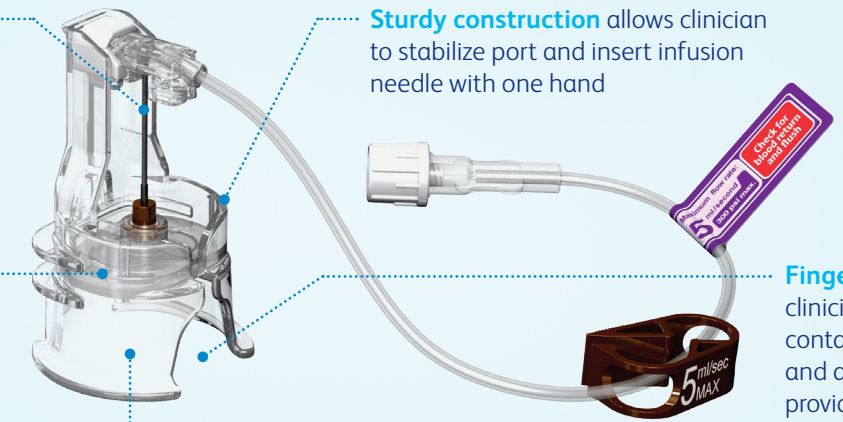
Infusion needle comes preloaded in the stabilizer and is ready to access the port once dropped onto the sterile field

Sturdy construction allows clinician to stabilize port and insert infusion needle with one hand

"Friction fit" design allows for placement of the antimicrobial disc in the stabilizer prior to insertion

Transparent material gives clinician a constant view of access site

Finger holes allow clinician to maintain contact with the port and are designed to provide protection from pre-use accidental needlesticks



The Amanda™ Port Stabilizer is a single-use item and should be properly discarded after the port is accessed. The port stabilizer is contraindicated for use with dual lumen ports.



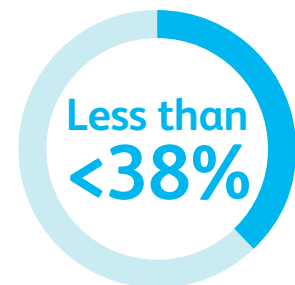
Did you know...

...Ports can be accessed for more than just chemotherapy?

The port system can be used for:

- Infusion of medications
- IV fluids
- Parenteral nutrition solutions
- Blood products
- Withdrawal of blood samples

...Ports can be accessed in many areas of a hospital or clinic, not just the oncology department?



of med/surg departments, ICUs and EDs access their patients' ports.

INS 2014 blinded n=102

Ordering information

AllPoints™ Port Access Systems containing the Amanda™ Port Stabilizer

Product code	Description
Power-injectable	
AS132075	AllPoints™ Port Access System, PowerLoc™ Max with Y-Site, 20 G x .75 in.
AS142075	AllPoints™ Port Access System, PowerLoc™ Max, 20 G x .75 in.
AS142010	AllPoints™ Port Access System, PowerLoc™ Max, 20 G x 1 in.
AS142010G	AllPoints™ Port Access System, PowerLoc™ Max, GuardIVa™ Dressing, 20 G x 1 in.
Non power-injectable	
AS152075	AllPoints™ Port Access System, SafeStep™ Huber Needle Set with Y-Site, 20 G x .75 in.
AS152075G	AllPoints™ Port Access System, SafeStep™ Huber Needle Set with Y-Site, GuardIVa™ Dressing, 20 G x .75 in.
AS162075	AllPoints™ Port Access System, SafeStep™ Huber Needle Set, 20 G x .75 in.
AS162010	AllPoints™ Port Access System, SafeStep™ Huber Needle Set, 20 G x 1 in.
AS162075G	AllPoints™ Port Access System, SafeStep™ Huber Needle Set, GuardIVa™ Dressing, 20 G x .75 in.
AS162010G	AllPoints™ Port Access System, SafeStep™ Huber Needle Set, GuardIVa™ Dressing, 20 G x 1 in.

References and footnotes

- * **PURELL® Use:** Hand sanitizer to reduce bacteria on the skin.
- * **PURELL® Cautions/Warnings: Flammable. Keep away from fire or flame. For external use only.** Do not use in or near the eyes. In case of contact, rinse eyes thoroughly with water. Stop use and consult a doctor if irritation occurs.

BD, Franklin Lakes, NJ, 07417, U.S.
201.847.6800

[bd.com](https://www.bd.com)

BD, the BD Logo, AllPoints, Amanda, Chloraprep, GuardIVA, MiniLoc, PowerLoc, PowerPort, SafeStep and Sentrinx are property of Becton, Dickinson and Company or its affiliates. All other trademarks are the trademarks of their respective owners. © 2025 BD. All rights reserved. BD-10331 (12/25)

