



BD Cathena™ Safety IV Catheter

with BD Multiguard™ Technology

Points to practice and tips for success



Tips for success

Insertion

- Release the tip seal before insertion by holding the grip and moving the catheter forward ~3 mm
- Lower the initial insertion angle, keeping the elbow low
- Stabilize and straighten the vessel throughout advancement

Visualizing blood return

- Look for initial blood return along the catheter
- Look for secondary blood return in the flash chamber
- Tertiary blood return will be seen in the distal portion of the catheter hub

Threading with ease

- Release the tip seal before insertion by holding the grip and moving the catheter forward ~3 mm
- After blood return is seen, lower and advance entire catheter/needle unit slightly to ensure the catheter tip is within the vessel
- Push the catheter forward off the needle while holding the needle stationary
- Keep the vessel stabilized and straightened

Secure connection

- Holding the catheter hub, firmly push and twist connecting device
- For devices with a movable spin collar, pull the spin collar back and make the connection prior to tightening the spin collar

Points to practice

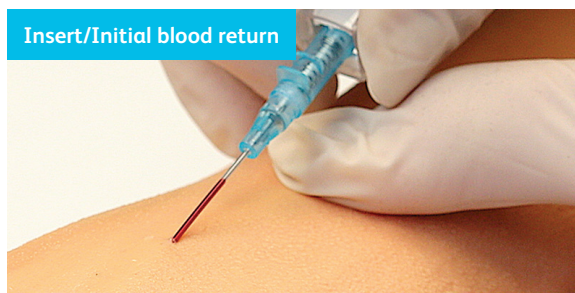
Prepare

- Holding the grip, move the catheter forward ~3 mm to loosen
- Firmly reset to the original position with the push tab facing upwards



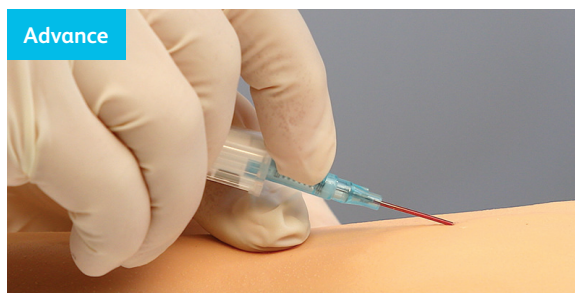
Insert/Initial blood return

- Stabilize the vessel and perform the venipuncture
- Look at the catheter for initial blood return



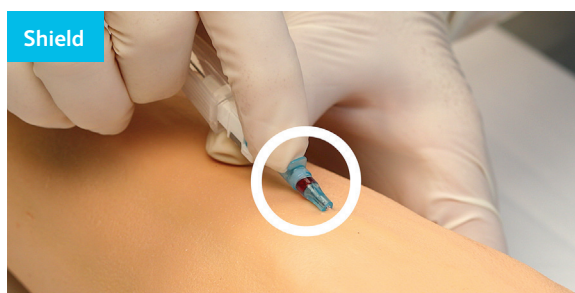
Advance

- Lower the catheter angle and advance the entire catheter and needle unit slightly to ensure the catheter tip and not just the needle tip is within the vessel
- Secondary blood return can be seen in the flash chamber
- While stabilizing the vessel, push the catheter off the needle and into the vessel. Avoid pulling back on the needle



Shield

- Release the tourniquet
- Stabilize the catheter and remove the needle
- Tertiary blood return can be seen in the distal portion of the catheter hub



Tertiary blood return

Connect and stabilize

- Firmly push and twist luer devices to securely connect to the catheter hub.
- Stabilize the catheter and apply a sterile dressing according to your policy



Refer to package insert for complete instructions for use.

BD, Sandy, UT, 84070, U.S.

[bd.com](https://www.bd.com)