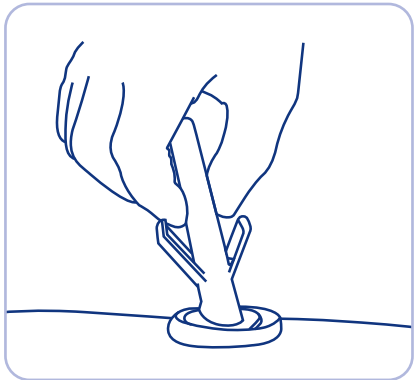
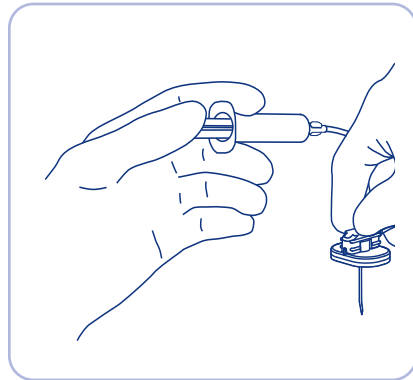


BD PowerLoc™ Max Safety Infusion Set

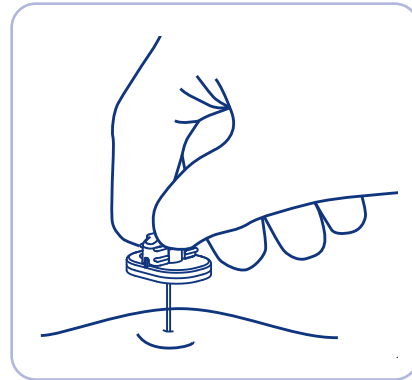
Points to practice*



1 Prepare the port site for sterile accessing following institution protocol.

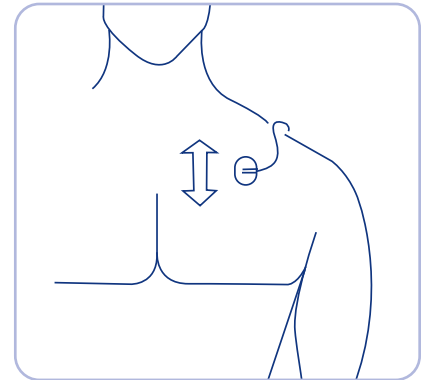


2 Prime infusion set using aseptic technique following institution protocol.

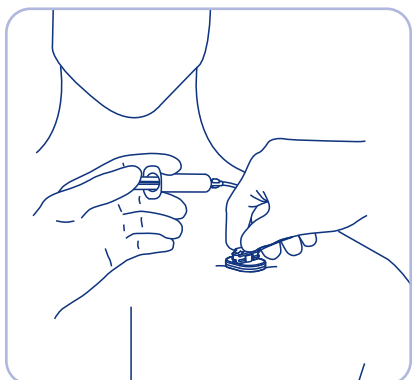


3 Insert needle perpendicular to the port septum.

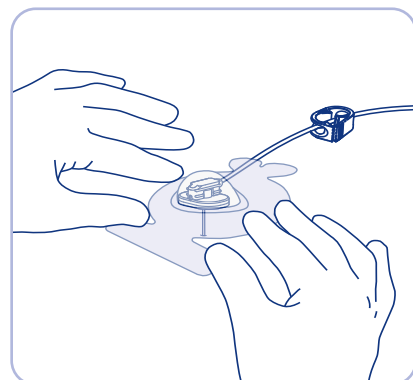
Note: The textured handle and base are not connected. You may position the base on the skin as needed.



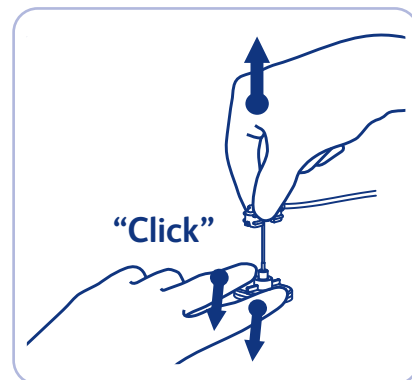
4 Orient base in single or dual ports as shown.



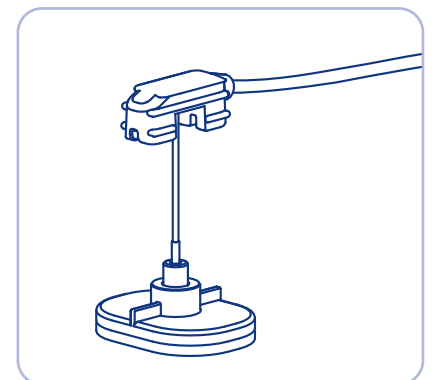
5 Verify correct needle placement by aspirating for blood. Flush per institution protocol and close clamp on extension tubing.



6 Dress and secure site per institutional protocol. Begin injection, infusion or blood aspiration per institutional procedure.



7 To deaccess: Firmly **pull** the textured handle up until you feel a firm stop and the needle is locked in the safety position.



8 Dispose of set in a sharps container.



Use aseptic technique. Refer to illustration 1 when using this device.

Always inspect for integrity of patients skin over the port septum prior to accessing site.

Removal:

- 1** After therapy completion, **flush** port per institutional protocol. Close the clamp while injecting the last 0.5 mL of solution.
- 2** With non-dominant hand, **stabilize** the port.
- 3 Deaccess** per instructions of the appropriate device as listed above.

* Please consult product labels and inserts for any indications, contraindications, hazards, warnings, precautions and directions for use.