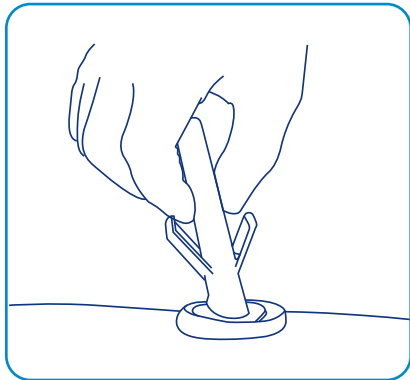
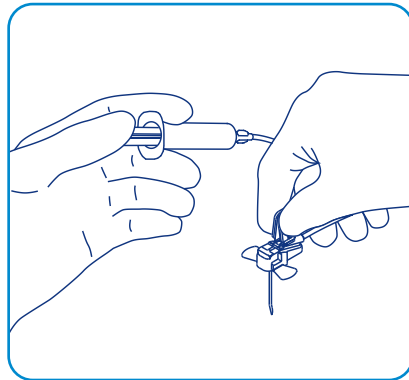


# BD MiniLoc™ Safety Infusion Set

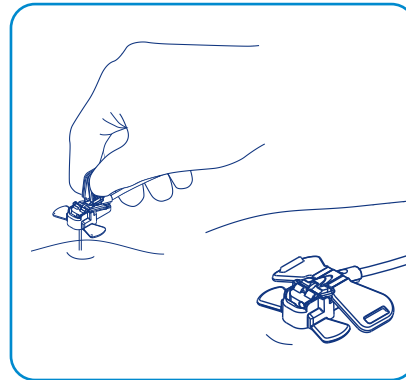
Points to practice\*



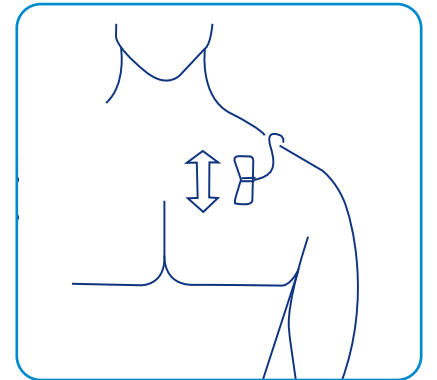
**1 Prepare** the port site for sterile accessing following institution protocol.



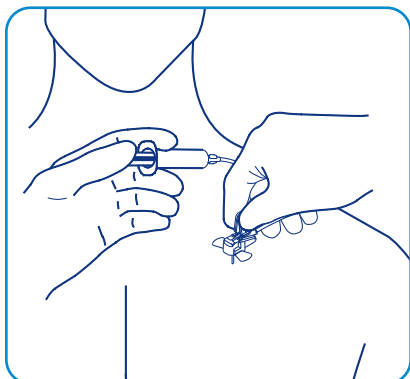
**2 Prime** infusion set using aseptic technique following institution protocol.



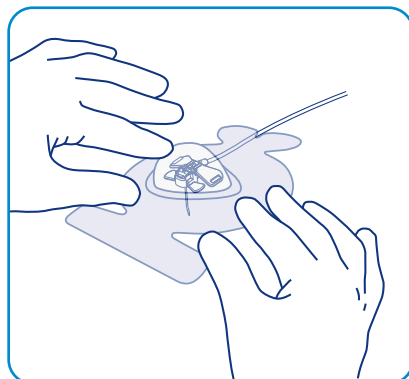
**3 Insert** needle perpendicular into the port septum.  
**Note:** It is not necessary to push downward on front of device while accessing port.



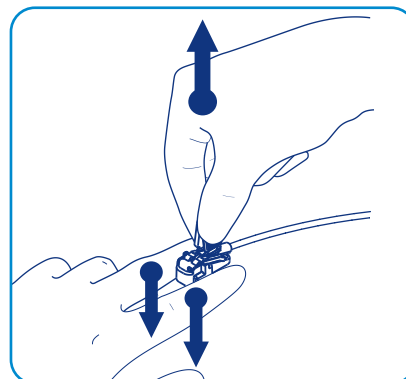
**4 Orient** wings in single or dual ports as shown.



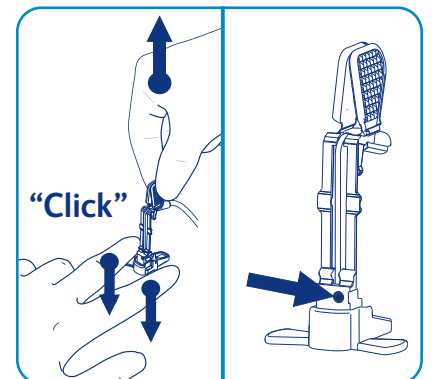
**5 Verify** correct needle placement by aspirating for blood. **Flush** per institution protocol and close clamp on extension tubing.



**6 Dress and secure** site per institutional protocol. Begin injection, infusion, or blood aspiration per institutional procedure.



**7 To deaccess:** Stabilize the port by **securely holding** the finger tabs down.



**8 Firmly pull** the wings up until you hear or feel a “click” and visually observe the orange dot. Dispose of set in a sharps container.



**Use aseptic technique. Refer to illustration 1 when using this device.**

Always inspect for integrity of patients skin over the port septum prior to accessing site.

#### Removal:

- 1** After therapy completion, **flush** port per institutional protocol. Close the clamp while injecting the last 0.5 mL of solution.
- 2** With non-dominant hand, **stabilize** the port.
- 3 Deaccess** per instructions of the appropriate device as listed above.

\* Please consult product labels and inserts for any indications, contraindications, hazards, warnings, precautions and directions for use.

[bd.com](https://www.bd.com)

BD, the BD Logo and MiniLoc are trademarks of Becton, Dickinson and Company or its affiliates. © 2024 BD. All rights reserved. BD-33468 (09/24)

