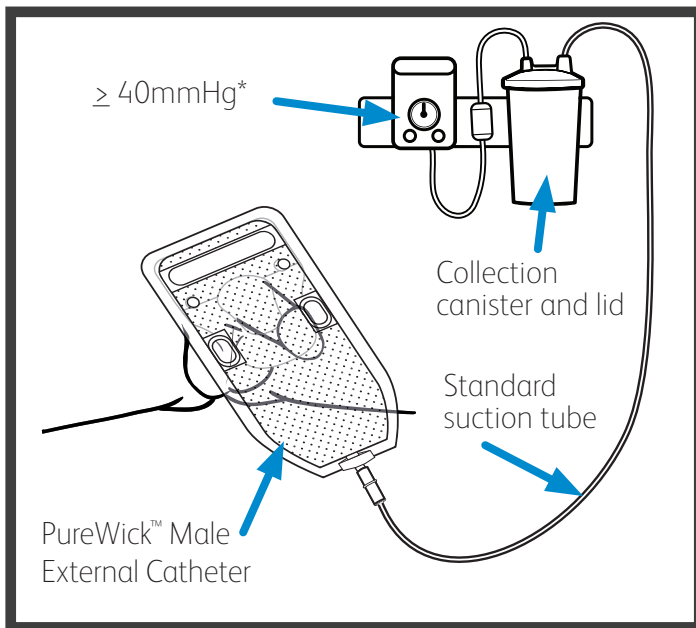




PureWick™ Male External Catheter

Is your patient a good candidate?

- ✓ Patient does not meet indications for indwelling catheter.^{1,2}
- ✓ Difficulty using a urinal.^{3,4}
- ✓ Skin irritation or injury related to urinary incontinence or diapers.⁵
- ✓ Difficulty ambulating to toilet.⁶
- ✓ Patient is bedridden.



**Always use the minimum amount of suction necessary.*

Tips and reminders for placement and removal†

- Before placing the device, if there is significant pubic hair, trim or clip the pubic hair.
- Perform perineal care using the included wipes and assess skin integrity. Use the included drying wipe prior to placement of the device. Moisture on skin will weaken the adhesive.
- Assess device placement and patient's skin at least every 2 hours.
- Replace the PureWick™ Male device at least every 24 hours or if soiled with feces, blood, or semen.

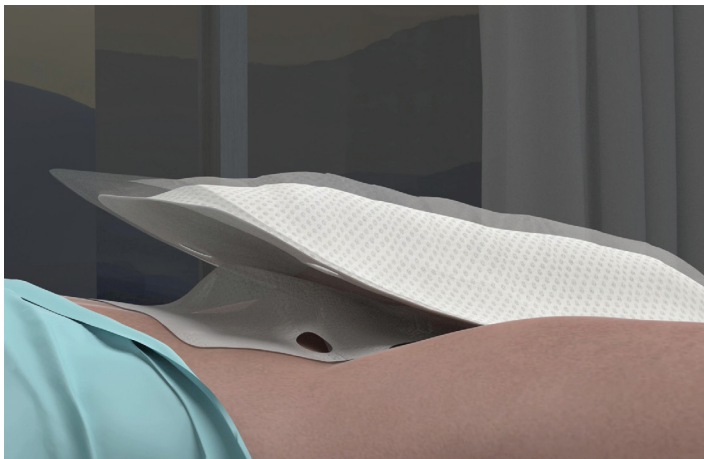


1. Geng V, Bonns E, Eelen P, Seidler C, Cobussen-Boekhorst H (2008) Good Practice in Health Care The Male External Catheter. European Association of Urology Nurses. Arnhem, The Netherlands: Drukkerij Gelderland. ISBN 978 90 70244 80 4.
2. Gray M, Skinner C, Kaler W (2016) External Collection Devices as an Alternative to the Indwelling Urinary Catheter: Evidence-Based Review and Expert Clinical Panel Deliberations. J Wound Ostomy Continence Nurs 43 (3): 301-7.
3. Gattinger H, Werner B, Saxer S (2013) Patient experience with bedpans in acute care: a cross-sectional study. J Clin Nurs:22(15-16):2216-24.
4. Rosdahl CB, Kowalski MT. Textbook of Basic Nursing. Eleventh Ed. Philadelphia: Wolters Kluwer. 2017. pp. 730.
5. Skin Health Connected to the Use of Absorbent Hygiene Products: A Review Johanna Karlsson Bender
6. Tzeng HM (2010) Understanding the prevalence of inpatient falls associated with toileting in adult acute care settings. J Nurs Care Qual 25 (1): 22-30.

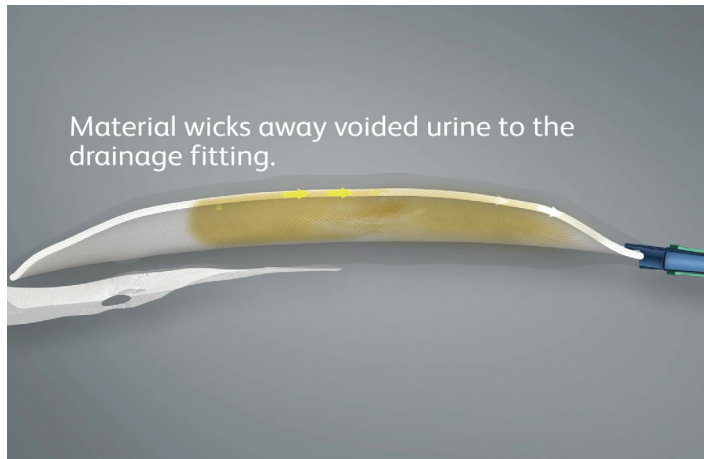
PureWick™

Male External Catheter Kit

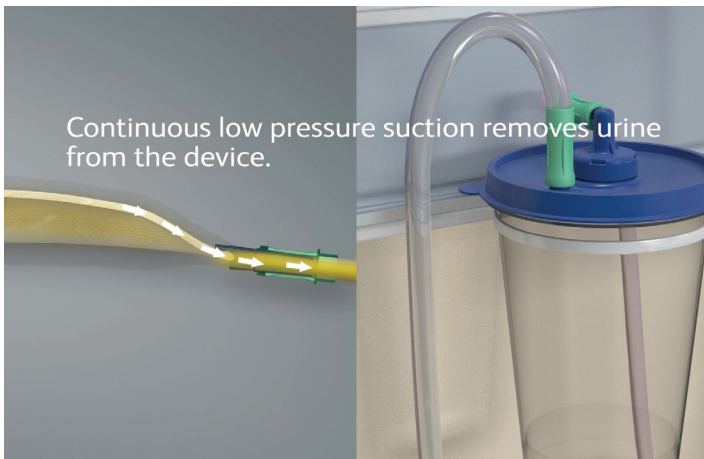
How does the PureWick™ Male External Catheter work?



After proper placement of the PureWick™ Male External Catheter, patients are able to void.



The PureWick™ Male External Catheter uses low pressure suction to wick voided urine to the drainage fitting at the bottom of the device.



The low pressure suction pulls urine away from the base of the device.



Urine is removed from the device and collected in the designated suction canister.

Description/Indication: The device is intended for non-invasive urine output management in male patients.

Contraindications: Patients with urinary retention.

Precaution:

- Not recommended for patients who are:
 - Agitated, combative, or uncooperative and might remove the device.
 - Having frequent episode of bowel incontinence without a fecal management system in place.
 - Experiencing skin irritation or breakdown at site.
- Do not use barrier cream on the penis or pubic skin around the base of the penis when using the device. Creams may impede suction or weaken adhesive.
- Proceed with caution in patients who have undergone recent surgery of the external urogenital tract, penis, or pubic area.
- Always assess skin for compromise and perform perineal care prior to placement of a new device.

Warning:

- Do not use on irritated or compromised skin.
- Do not cover fresh surgical wounds with the device.
- Do not use the device with any material or in any position that does not allow for sufficient airflow.
- To avoid potential skin injury, never pull the device directly away from the patient. Always peel in the direction from head to foot.
- Discontinue use if an allergic reaction occurs.
- After use, this product may be a potential biohazard. Dispose of in accordance with applicable local, state, and federal laws and regulations.

Please consult product label and insert for any indications, contraindications, hazards, warnings, cautions, and directions for use.

BD, Covington, GA 30014, U.S.
844.823.5433

bd.com