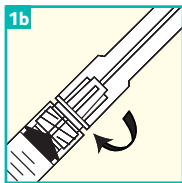
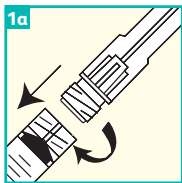


BD Integra™ Syringe

with retracting BD PrecisionGlide™ Needle

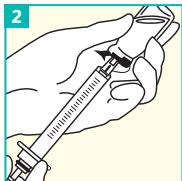
Quick reference card



Attachment

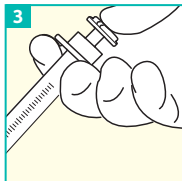
1a. Attach the BD Integra™ Needle onto the BD Integra™ Syringe with a push and a clockwise twist.

1b. If pre-attached, tighten the needle to the syringe prior to use. Pull the shield straight off the needle.



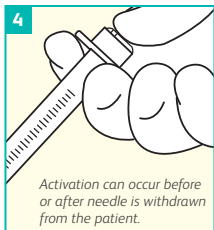
Aspiration

Draw up medication in accordance with your institution's protocol.



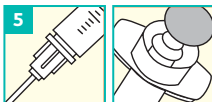
Injection

Administer medication in accordance with your institution's protocol.

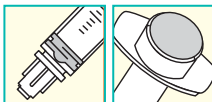


Activation

Push plunger rod to activate the safety mechanism. Depress until you sense two “clicks.”



Before



After

Needle retraction

The needle will disappear into the syringe and the plunger will be recessed into the barrel when activation is complete.

After activation or if unable to activate, discard immediately into an approved sharps collector after single use.

Remember

- If activation is performed **before** the needle is withdrawn from the patient, do not advance the needle while depressing the plunger rod.
- If activation is performed **after** the needle is withdrawn from the patient, minimal splatter may occur. When activating the device outside of the patient, hold the device downward at arm's length and activate while pointing away from self and others. Keep the device within sight at all times to avoid accidental needlestick injury.
- BD Integra™ Needle and Syringe **do not** have a standard Luer connection. Conventional Luer Lock needles cannot be used with the BD Integra™ Syringe.
- **Do not** use this product to draw blood or for venipuncture.
- When delivering highly viscous medications, use a 22 G or 21 G BD Integra™ Retracting Needle, and inject at a controlled rate.
- Follow your institution's policy for aseptic technique and skin preparation.
- Follow your institution's policy for safe disposal of all medical waste.
- Please consult BD product labels and package inserts for any indications, contraindications, hazards, warnings, cautions and Instructions for Use.

BD, 1 Becton Drive, Franklin Lakes, NJ, 07417, USA

bd.com



BD, the BD Logo, Integra and PrecisionGlide are trademarks of Becton, Dickinson and Company or its affiliates. All other trademarks are the property of their respective owners. © 2020 BD. All rights reserved. BD-9613 (10/20)