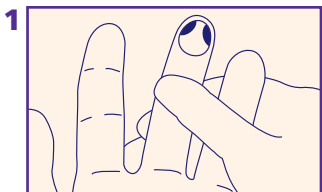


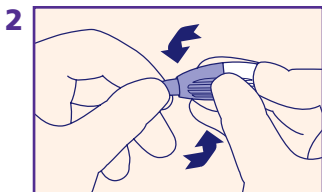
BD Microtainer®

Contact-Activated Lancet

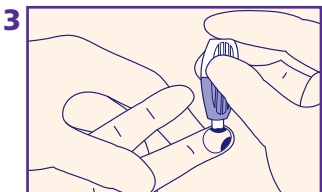
QUICK REFERENCE CARD



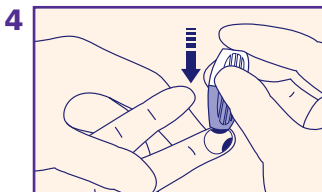
Identify the desired puncture site, (shaded area) and make sure it is properly cleansed according to your facility's established procedures.



Twist off tab to break the seal and discard.



Position safety lancet firmly against puncture site as illustrated. Hold safety lancet between fingers.



To activate, **press** safety lancet firmly against the puncture site. Do not remove the device from the site until an audible click is heard.

5 Discard used safety lancet into an approved sharps container.

Just Go with the Flow!

BD Microtainer® Contact-Activated Lancets

Designed with a **positive patient experience** in mind

Select the lancet best suited to your needs

Patient condition and warming the puncture site may affect sample volume

Low Flow	 A purple and white lancet with a white handle and a purple body.	Ref: 366592 Depth: 1.5 mm • Needle: 30 G Demonstrates significantly less pain for your patients than comparable products ¹
Medium Flow	 A pink and white lancet with a white handle and a pink body.	Ref: 366593 Depth: 1.8 mm • Needle: 21 G
High Flow	 A blue and white lancet with a white handle and a blue body.	Ref: 366594 Depth: 2.0 mm • Width: 1.5 mm Enables 500µL single puncture collection more consistently ²

¹ BD Clinical Documentation VS7499

² BD Clinical Study

COLLECTION TIPS

See the CLSI guidelines for recommendations for the collection of diagnostic capillary blood specimens.*

*NCCLS 2004 Doc. H4-A5 Vol. 24, No. 21

CAUTION: Handle all biologic samples and blood collection “sharps” (lancets, needles, luer adapters, and blood collection sets) in accordance with the policies and procedures of your facility. Obtain appropriate medical attention in the event of any exposure to biologic samples (e.g., through a puncture injury) since samples may transmit viral hepatitis, HIV (AIDS), or other infectious diseases. Utilize any safety-engineered feature if the blood collection device provides one. Discard all blood collection “sharps” in biohazard containers approved for their disposal.