

BD Vacutainer®
Luer-Lok™ Access Device
No Additive (Z) Plus Tube Kit
REF 366409

Components:

BD Vacutainer® Luer-Lok™ Access Device **STERILE EO**
BD Vacutainer® No Additive (Z) Plus Tube
6.0 mL • 13 x 100 mm **IVD** **STERILE R**

BD Vacutainer® Luer-Lok™ Access Device is sterile within its packaging.
 BD Vacutainer® Tube interior is sterile.

Intended Use:

The BD Vacutainer® Luer-Lok™ Access Device is compatible with a needleless IV site designed for luer-lock access and can be used with a BD Vacutainer® No Additive (Z) Plus Tube 6.0 mL • 13 x 100 mm to clear the line and discard fluid prior to specimen collection.

Please refer to your facility's recommended policies and procedures when flushing a catheter line.

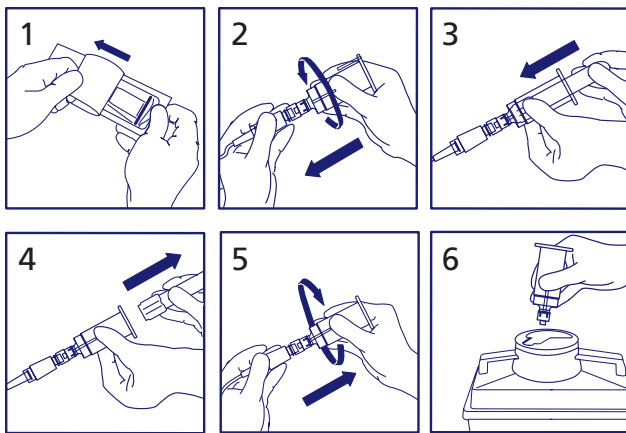
Procedure Note:

Allow natural vacuum of tube to draw specimen into tube. Evacuated tubes are designed to draw the volume indicated. Filling is complete when vacuum no longer continues to draw. The laboratory should be consulted regarding the use of this product.

UNIVERSAL PRECAUTIONS:

Handle all biologic samples and blood collection "sharps" (lancets, needles, luer adapters, and blood collection sets) in accordance with the policies and procedures of your facility. Obtain appropriate medical attention in the event of any exposure to biologic samples (e.g. through a puncture injury) since samples may transmit viral hepatitis, HIV (AIDS), or other infectious diseases. Utilize any safety-engineered feature if the blood collection device provides one. Discard all blood collection "sharps" in biohazard containers approved for their disposal.

**Recommended Assembly And Use For
 BD Vacutainer® Luer-Lok™ Access Device**



No Additive (Z) Plus Tubes

Interior Coating: No Coating
Interior Additive: No Additive
Stopper Lubrication: Silicone

Intended Use:

The BD Vacutainer® No Additive (Z) Plus Tube is a sterile multi-purpose specimen collection tube that may be used either as a discard tube or a secondary tube.

Discard Tube:

The BD Vacutainer® No Additive (Z) Plus Tube may be used for routine phlebotomy (venipuncture) only as a discard tube.

Secondary Tube

As a secondary tube, the BD Vacutainer® No Additive (Z) Plus Tube may be used for collection and transport of a specimen in a closed system.

Instructions for Use

When used with collection devices, tubes slide into the holder and are pushed onto the non-patient end of collection device, allowing the vacuum in the tube to draw liquid specimens to a predetermined level.

Warnings and Precautions

• When used for direct draw, the BD Vacutainer® No Additive (Z) Plus Tube is only intended to be used as a discard tube.

• Please refer to your facility's recommended policies and procedures when flushing a catheter line.

• When transferring a blood sample from a syringe, a BD Blood Transfer Device is recommended. Transferring a sample to a tube using a syringe and needle is not recommended.

• Do not use BD Vacutainer® Luer-Lok™ Access Device or BD Vacutainer® No Additive (Z) Plus Tubes if contents appear to be damaged or if foreign material is present.

• Practice Standard Precautions. Use gloves, gowns, eye protection, other personal protective equipment, and engineering controls to protect from specimen splatter, specimen leakage, and potential exposure to pathogens.

• Discard all biohazardous materials in containers approved for their disposal.

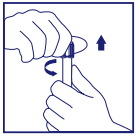
• Do not attempt to remove tube closures, conventional or BD Hemogard™ by rolling the thumb over the closure. Rather use a twist and turn motion when removing closures. Refer to instructions for removing BD Hemogard™ closures.

• The quantity of a liquid specimen drawn varies with altitude, ambient temperature, barometric pressure, tube age, venous pressure, and filling technique.

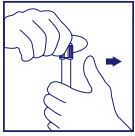
Instructions for BD Hemogard™ Closure

Follow these instructions when using a BD Vacutainer® No Additive (Z) Plus Tube with a BD Hemogard™ Closure.

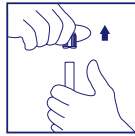
Removal of BD Hemogard™ Closure:



1. Grasp tube with one hand, placing the thumb under the closure. (For added stability, place arm on solid surface.) With the other hand, twist the BD Hemogard™ Closure while simultaneously pushing up with the thumb of the other hand ONLY UNTIL THE TUBE STOPPER IS LOOSENED.

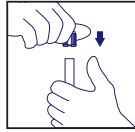


2. Move thumb away before lifting closure. DO NOT use thumb to push closure off tube. To help prevent injury during closure removal, it is important that the thumb used to push upward on the closure be removed from contact with the tube as soon as the closure is loosened.

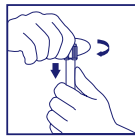


3. Lift closure off tube. In the unlikely event of the plastic shield separating from the rubber stopper, DO NOT REASSEMBLE CLOSURE. Carefully remove rubber stopper from tube.

Reinsertion of BD Hemogard™ Closure:



1. Replace closure over tube.



2. Twist and push down firmly until stopper is fully resealed. Complete reinsertion of the stopper is necessary for the closure to remain securely on the tube during handling.

Storage

Store kit at 4-25° C (39-77° F). Do not use BD Vacutainer® Luer-Lok™ Access Device or BD Vacutainer® No Additive (Z) Plus Tubes after their expiration dates.

Technical Service

Technical Service can be reached at 800.631.0174. You may also write to:

Technical Services

BD Diagnostic Systems - Preanalytical Systems
1 Becton Drive
Franklin Lakes, NJ 07417

Symbol Key

--- Do Not Reuse	--- In Vitro Diagnostic Medical Device
REF --- Catalog Number	--- Sterile
--- Batch Code	--- Consult Instructions For Use
--- Use By	--- Temperature Limitation
--- Manufacturer	--- Keep Away From Sunlight
--- Fragile, Handle With Care	

Rx Only (USA) 25°C
4°C