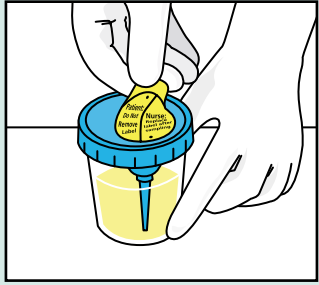
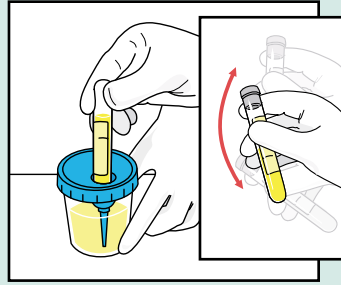


Processing Urine Samples with BD Vacutainer™ Collection Products

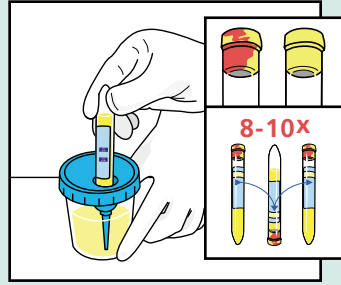
UA Preservative or Plain UA Tube and Culture & Sensitivity (C&S) Preservative Tube



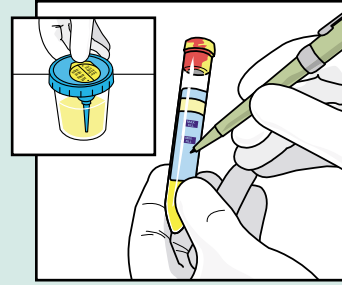
1. Peel back protective sticker to expose rubber-covered cannula.



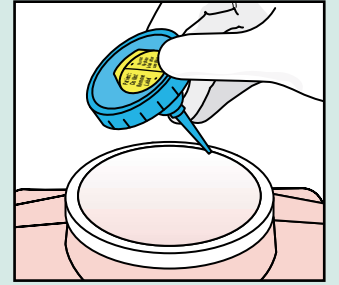
2.
 - Push C&S Preservative Tube (gray top) into the integrated transfer port.
 - Hold in position until flow stops.
 - Remove tube.
 - Shake tube vigorously.



3.
 - Push UA Preservative Tube (cherry red/yellow top) or plain UA Tube (yellow top) into integrated transfer port.
 - Hold in position until flow stops.
 - Remove tube.
 - Invert UA Preservative Tube 8-10 times to mix the sample.

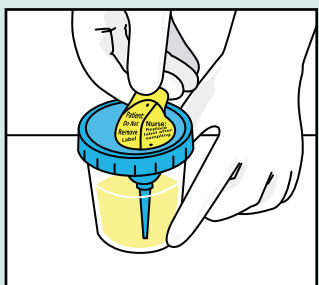


4.
 - Place protective sticker back over the integrated transfer port.
 - Label both filled tubes with patient's name, the date/time of specimen collection and any other data required by your institution.

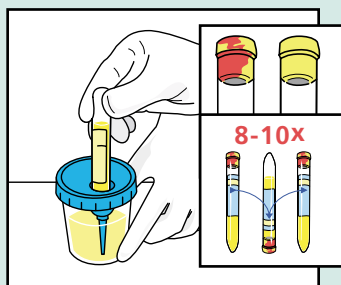


5.
 - Remove lid from cup and dispose in a sharps collector.
 - Dispose of urine according to your facility's policy.
 - Dispose of collection cup as a biohazard.

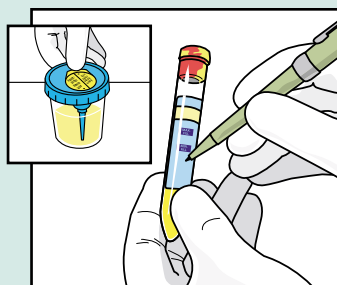
UA Preservative or Plain UA Tube Only



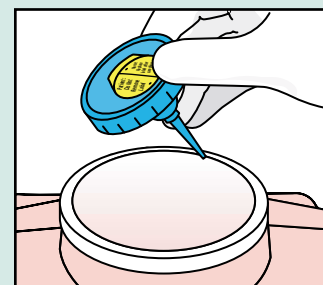
1. Peel back protective sticker to expose rubber-covered cannula.



2.
 - Push UA Preservative Tube (cherry red/yellow top) or plain UA Tube (yellow top) into integrated transfer port.
 - Hold in position until flow stops.
 - Remove tube.
 - Invert UA Preservative Tube 8-10 times to mix the sample.

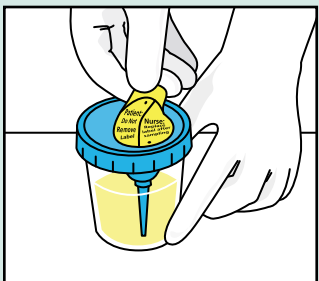


3.
 - Place protective sticker back over the integrated transfer port.
 - Label filled tube with patient's name, the date/time of specimen collection and any other data required by your institution.

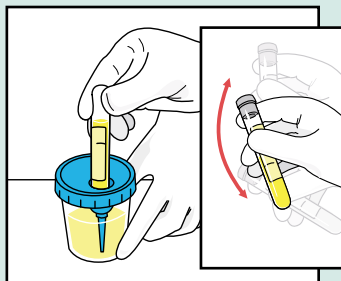


5.
 - Remove lid from cup and dispose in a sharps collector.
 - Dispose of urine according to your facility's policy.
 - Dispose of collection cup as a biohazard.

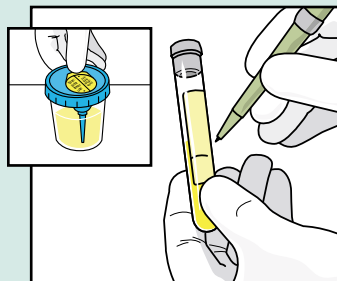
C&S Preservative Tube Only



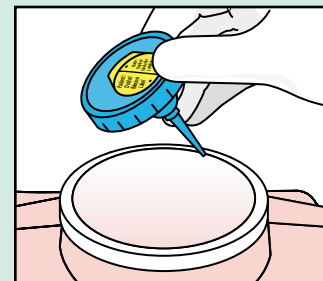
1. Peel back protective sticker to expose rubber-covered cannula.



2.
 - Push C&S Preservative Tube (gray top) into the integrated transfer port.
 - Hold in position until flow stops.
 - Remove tube.
 - Shake tube vigorously.



3.
 - Place protective sticker back over the integrated transfer port.
 - Label filled tube with patient's name, the date/time of specimen collection and any other data required by your institution.



5.
 - Remove lid from cup and dispose in a sharps collector.
 - Dispose of urine according to your facility's policy.
 - Dispose of collection cup as a biohazard.

BD Vacutainer Technical Services: 1.800.631.0174

BD Customer Service: 1.888.237.2762

Handle all biologic samples and medical "sharps" (lancets, needles and transfer straws) according to the policies and procedures of your facility. Obtain appropriate medical attention in the event of any exposure to biologic samples (for example, through a puncture injury) since they may transmit viral hepatitis, HIV (AIDS), or other infectious diseases. BD does not recommend resheathing used needles, but the policies and procedures of your facility may differ and must always be followed. Discard any medical "sharps" in biohazard containers approved for their disposal.



**BD Vacutainer Systems
Preanalytical Solutions**

1 Becton Drive
Franklin Lakes, NJ 07417

www.bd.com/vacutainer